

USER MANUAL

Find More Information and Resources.

Please visit our Website: <http://www.teneth-cnc.com/>

If you have any questions, please contact us or email to admin@teneth-cnc.com.





Information in this document is subject to change without notice.

Reproduction of these materials in any manner whatsoever without the written permission of Teneth Inc. Is strictly forbidden.

1. Important Information

Before you use the cutting plotter, please make sure that you have read the safety precautions and instructions below.

Notes, Cautions, and Warnings

 NOTE: A NOTE indicates important information that helps you make better use of your cutting plotter.	
 CAUTION: A CAUTION indicates either potential damage to cutting plotter or loss of data and tells you how to avoid the problem.	
 WARNING: A WARNING indicates a potential for property damage, personal injury, or death.	
 WARNING	
Do not disassemble or remodel the plotter.	Handling of the power cable <ul style="list-style-type: none">• Use the supplied power cable. Take care not to damage, break or work upon the power cable. If a heavy material is placed on the power cable, or if it is heated or pulled, the power cable can break, thus resulting in fire or electric shocks.
<ul style="list-style-type: none">• Never disassemble or remodel the plotter. Disassembly or remodeling can result in an electric shock or breakdown of the machine.	
Avoid locating the plotter in a damp environment.	
<ul style="list-style-type: none">• Do not use the plotter in a damp place. Do not splash water onto the machine. Use in such an environment can give rise to fire, electric shocks or breakdown of the plotter.	
In case abnormal event occurs.	

- Use of the plotter under an abnormal condition where the device produces smoke or strange smell can result in fire or electric shocks. If such an abnormality is found, be sure to turn off the power switch immediately and unplug the cable from the wall outlet. Check first that the plotter no longer produces smoke, and contact your distributor for repair.
- Never repair your plotter by yourself since it is very dangerous for you to do so.

CAUTION

Do not place the cutting plotter in below places:

- A place exposed to direct sunlight.
- On an inclined surface.
- A place where temperature or humidity varies significantly.
Use the plotter under the following environmental conditions:
Operating environment: 20 to 35°C 35 to 65% (Rh)
- A place that vibrates.
- A place exposed to direct air flow from an air conditioner or the like.
- Around a place where flame is Used.

For blade

- Do not touch the cutter blade, which is very sharp.
- Do not shake or swing the cutter holder; otherwise, the blade may come off.

Be careful with the movable parts

- During an operation, do not touch any of the moving parts of this machine (such as the carriage). Also be careful to make sure that clothing and hair do not get caught.

Sheets

- Straighten the sheet of media, if significantly curled, before using it for printing.
Heavily curled sheet affects the cutting (plotting) result.

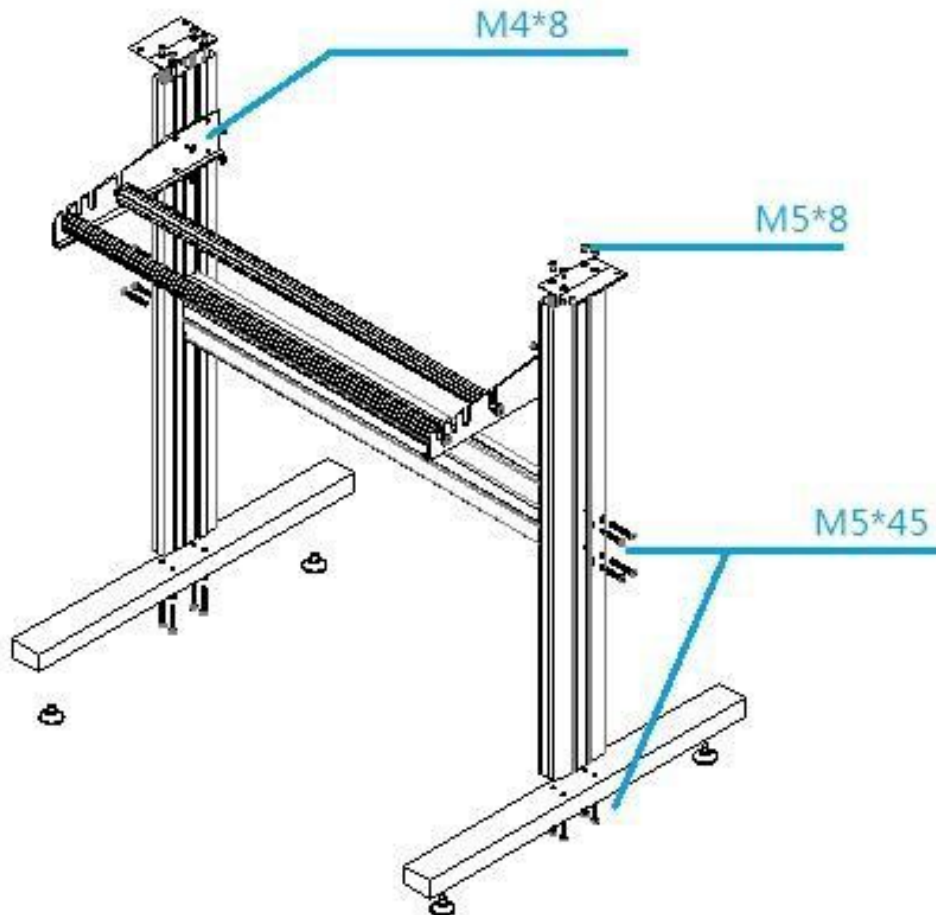
Always put the pinch rollers within the red marks.

Keep the tools away from children where they can reach.

Always connect the power cable to a grounded outlet.

3. Set up your cutting plotter

3.1 Stand (optional)



CAUTION: Must use M5*45 screws with washers.

Must use M5*10 screws to fix the cutting plotter to the stand.

3.2 Connect your cutting plotter

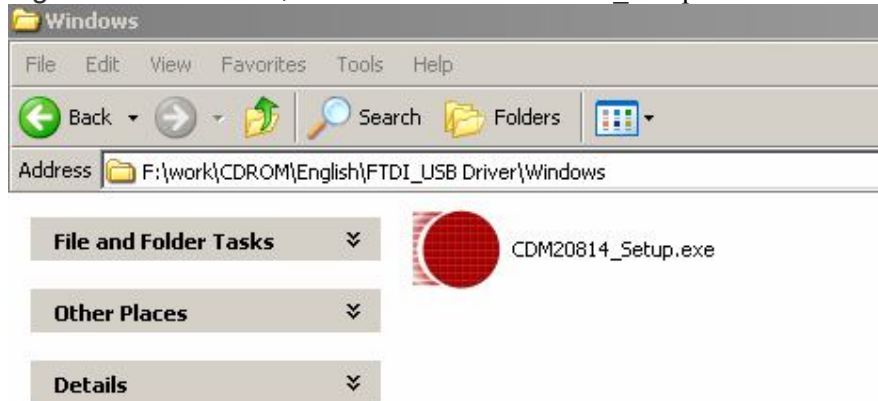
3.2.1 Connect the AC cable

Connect the AC cable to the AC connector on the plotter and to the electrical outlet.

3.2.2 Connect the USB cable (optional)

If you want to use the USB cable, you have to install the USB driver.

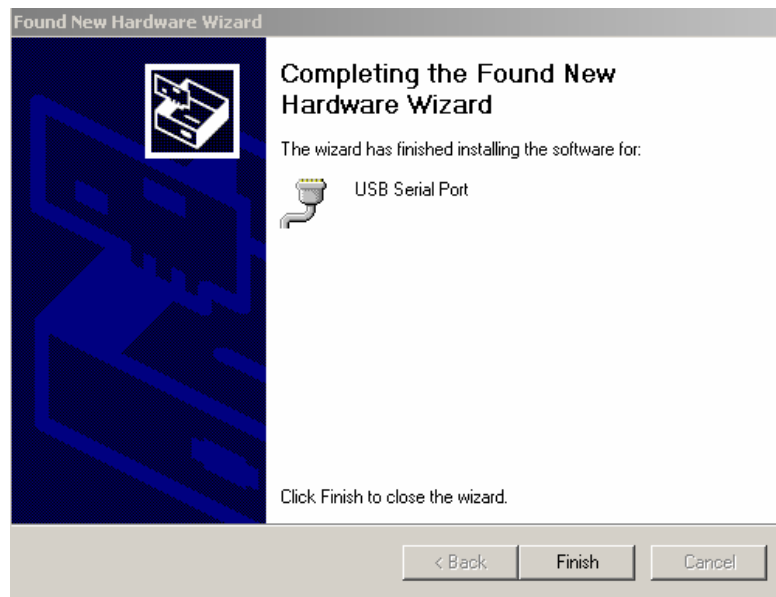
1. Find the following files from the CD, Double-click CDM20814_Setup.exe



2. connect USB cable with computer, it will display ' Found New Hardware' as follow window.

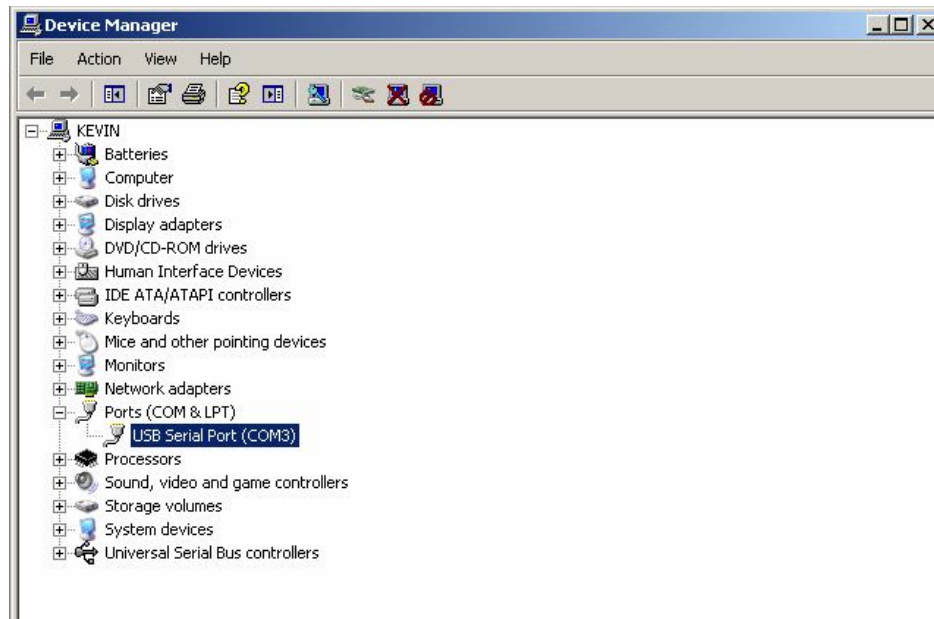


3. Click "NEXT"

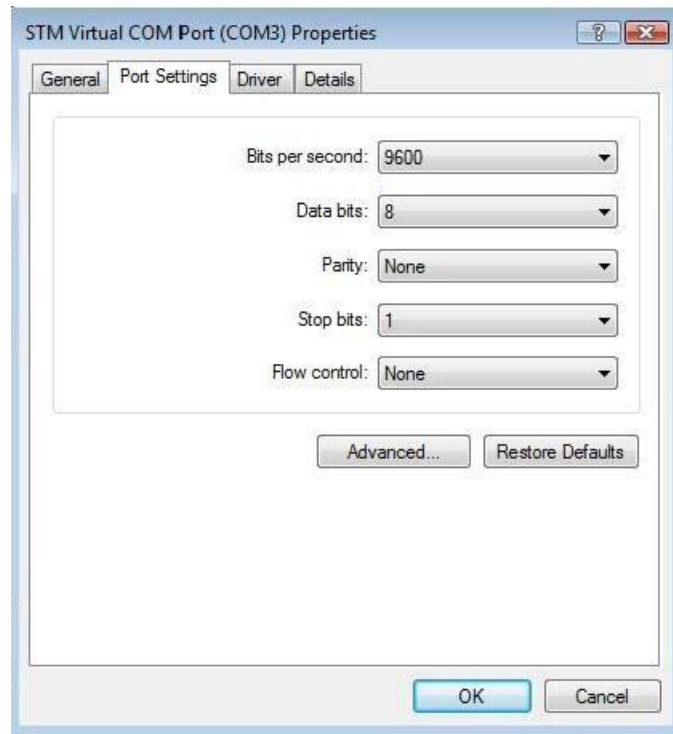


4. Click **“Finish”**

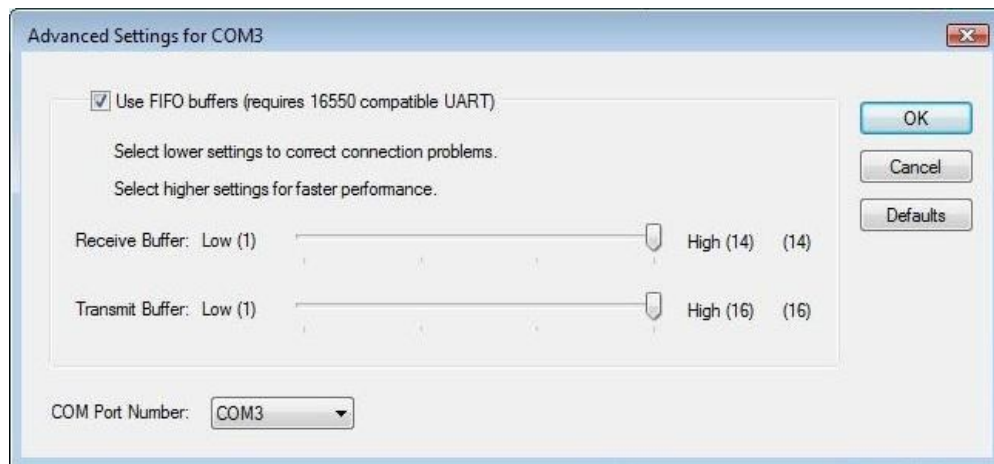
- ⑤. If driver was installed successfully, You can find a new port in **Device Manager**, shown as below



if you want to modify the default port No. of USB driver, just right-click port (COM3) as shown above, and select **“Properties”** in context menu.



Select “**Advanced...**”,



Select the Port Number. that you want to modify, then press “**OK**”

3.2.3 Connect the RS-232 cable (optional)

When you want to connect the RS-232C cable, you must observe the following notes



- NOTE:** (1) When connecting the cables, turn off first the power to the device and that to the host computer which the power cable is to be connected.
 (2) Do not plug in or unplug any cable during data transferring.

3.3 Blade installation

Figure 3-1 and 3-2 are the drawings of the blade holder.



Figure 3-1

How to install a blade

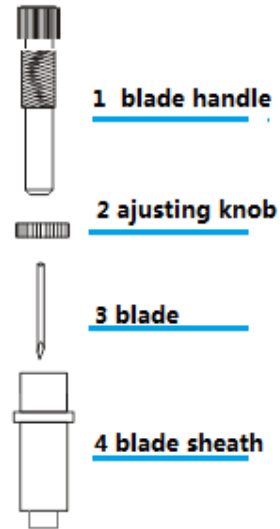
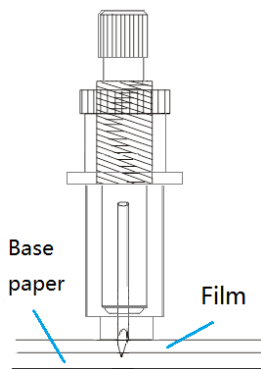
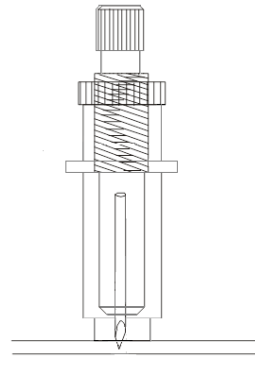


Figure 3-2

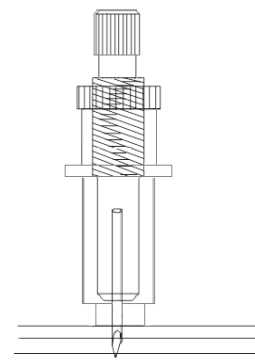
- (1) Remove the blade sheath by rotating it.
- (2) insert the blade into the hole of the blade handle.
- (3) Adjust the blade tip to suitable length by rotating the adjusting knob and blade sheath clockwise or count-clockwise.



OK



The length of blade is not enough



The length of blade is too long



NOTE: The suitable length means the blade's length is adjusted 0.1mm more than film's thickness and it can completely cut through the film layer yet avoid penetrating the base paper.

3.4 Blade holder installation

Install the blade holder into the tool holder of the carriage, press the brim of the blade holder against the tool holder. rotate the knob of the tool holder clockwise and surely fix it.



NOTE: Fix the tool holder firmly. If not, accurate and high-quality cutting will not be

achieved.

3.5 loading a sheet

Either a piece of sheet or a roll of sheet can be loaded on the plotter.



Figure 3-3



Figure 3-4

- (1) Lift the lever to rise the pinch rollers. (see Figure 3-3)
- (2) Load the sheet and slide to under the pinch rollers from either the front side or backside. The alignment ruler on the platen will help you to adjust the sheet precisely.
- (3) Slide the pinch rollers manually to the proper position. Be sure the pinch rollers must be positioned above the steel axes. The red mark on the top trail will remind you where the steel axes are.
- (4) Press the lever to lower down the pinch rollers.(see Figure 3-4)



NOTE: If you want to cutting a sheet without a reversed adhesive paper (like a pasteboard), You should use a sticker sheet under it.

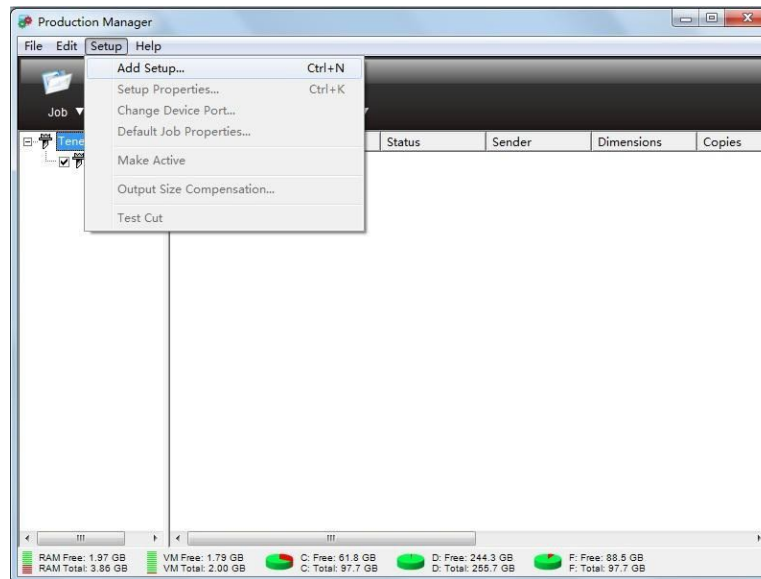


CAUTION: Move the pinch roller by applying force at the rear portion of the pinch roller support. Do not move it by holding its front rubber roller.

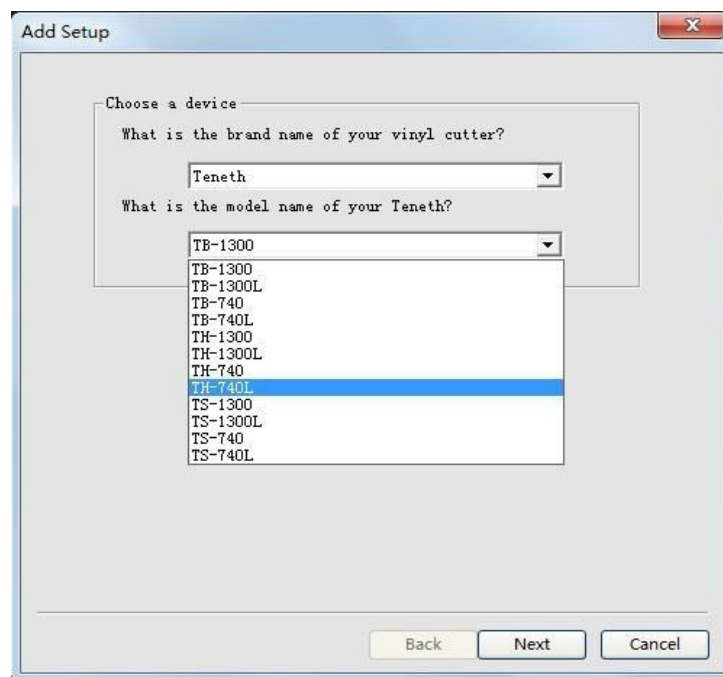
5. Advanced operations

5.1 Cut in FlexiSTATER Teneth Edition

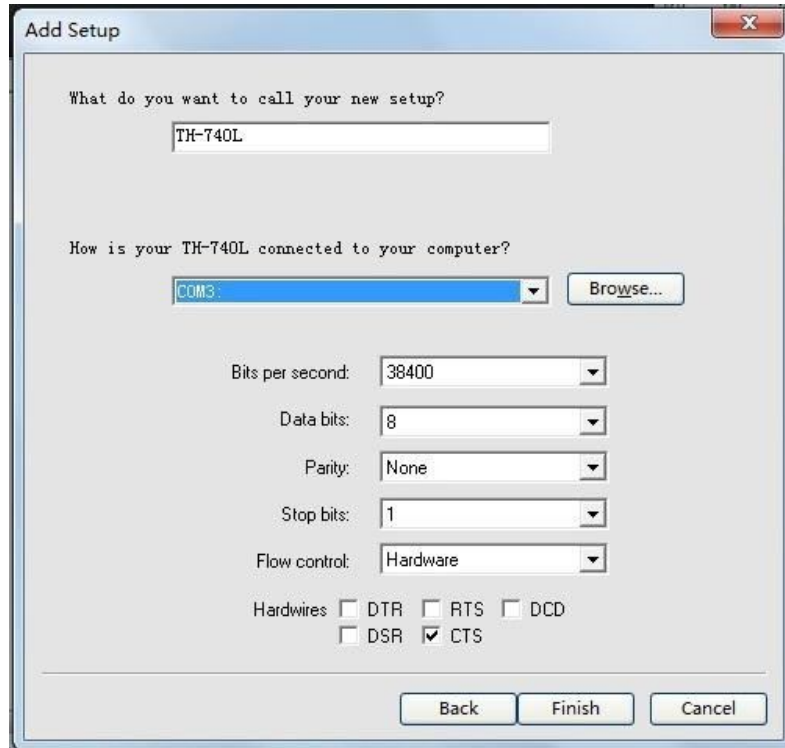
- (1) Install the software
- (2) After finishing the installation, run the **Production Manager**, Click “**Setup**”->”**Add setup...**”.



- (3) Select the names of brand and model upon your plotter, and click “**Next**”



- (4) Set parameters as below:

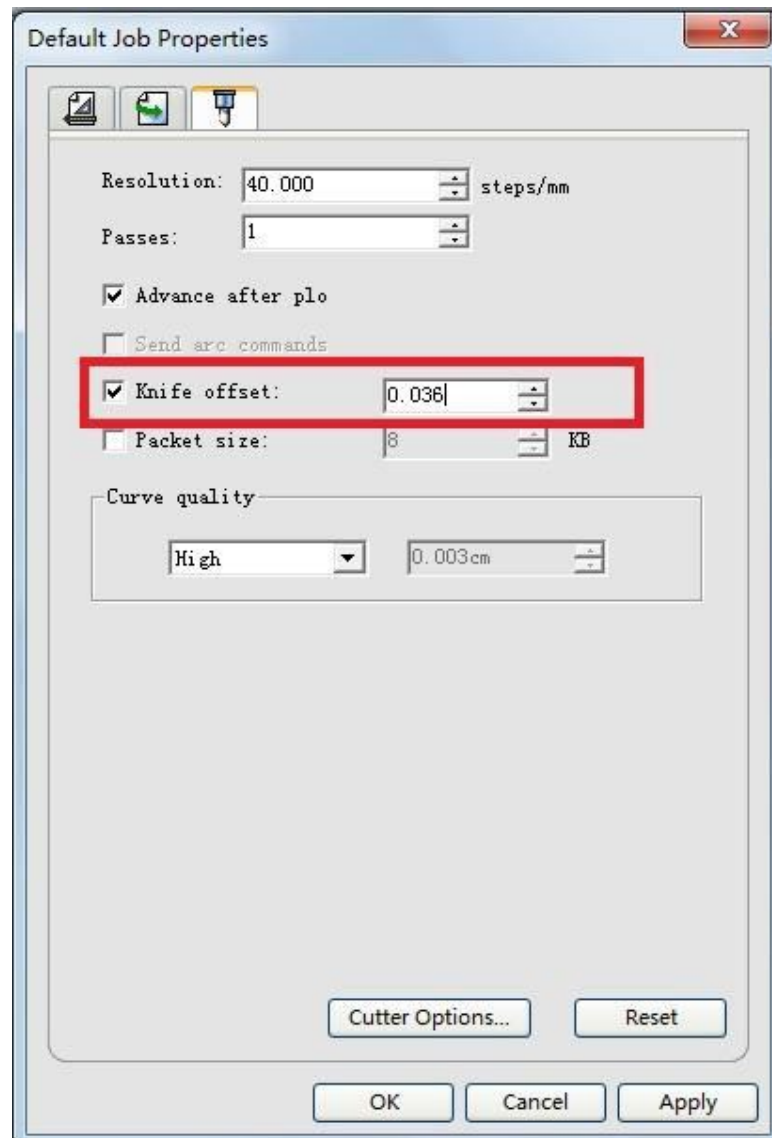


(5) Click **“Finish”**.

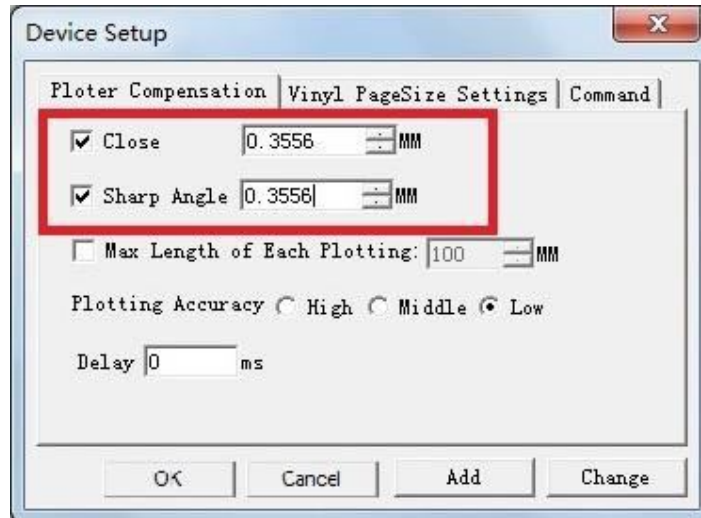
5.3 Cut 5mm or smaller letters

To achieve the best quality output, we suggest you use a narrow sheet. If use wide sheet, you should:

- (1) Position two pinch rollers as close as possible to both edges of the cutting area.
- (2) Make sure the loaded sheet is placed the flat with equal tension.
- (3) Set parameters as below:
 - ① In **Flexi**:

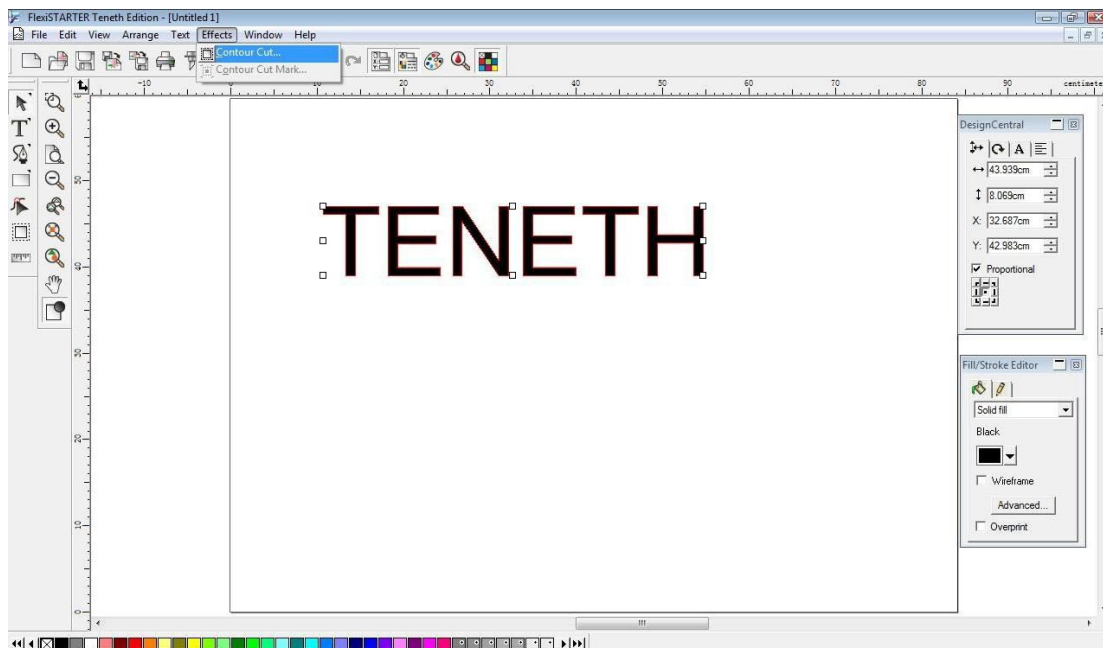


② In **ARTCUT**:



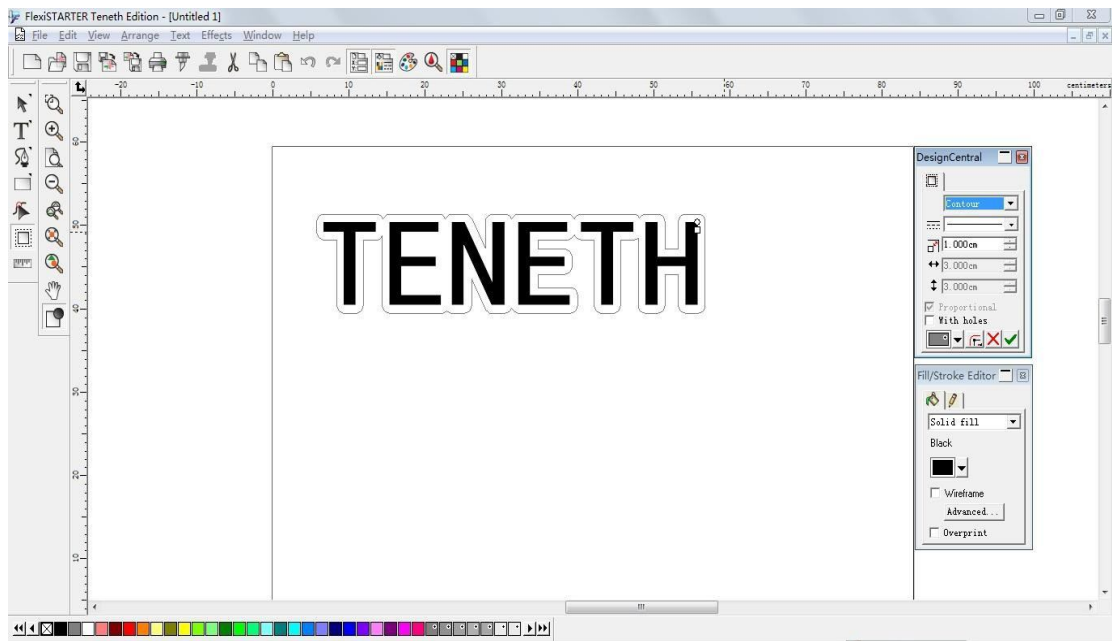
5.4 Contour Cut (optional)

- (1) If you are the first time to use this function, you should set the distance between red dot and pen firstly (see [P17-4.5](#)).
- (2) Create or open a graphic file in Flexi, and click “**Effects**”->”**Contour Cut...**” to create a contour.

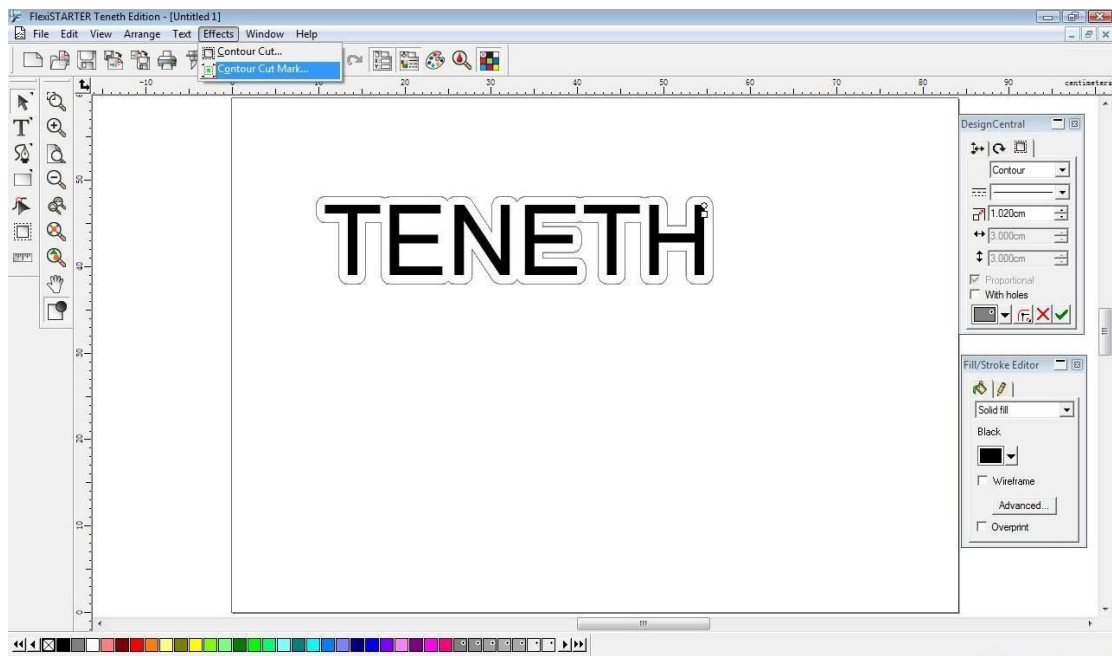


- (3) You can adjust related parameters in “**DesignCentral**” pop-up window, and then click

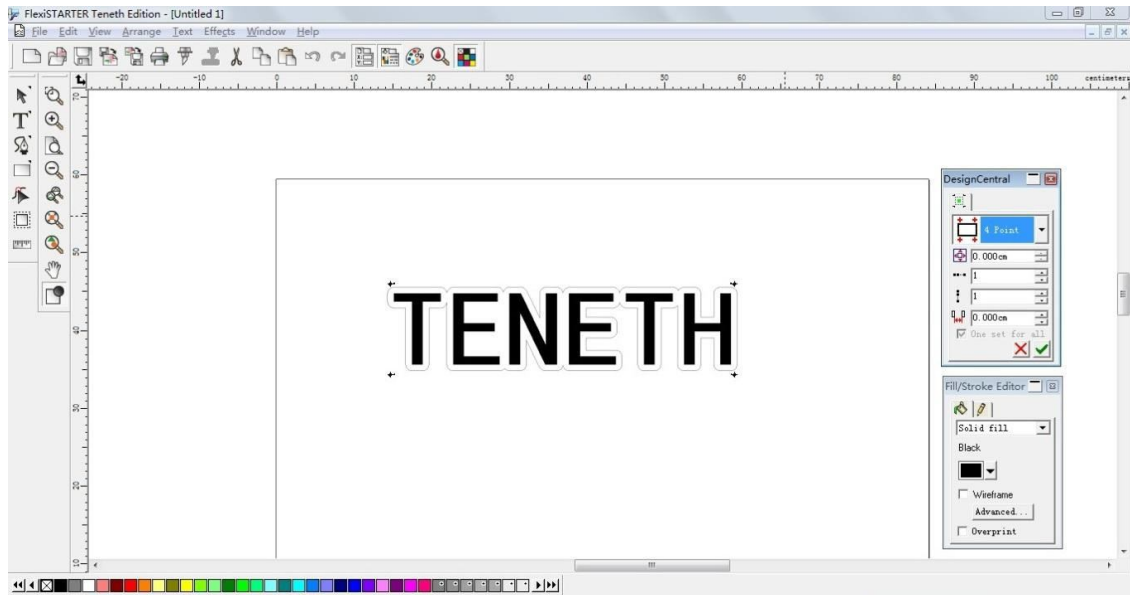




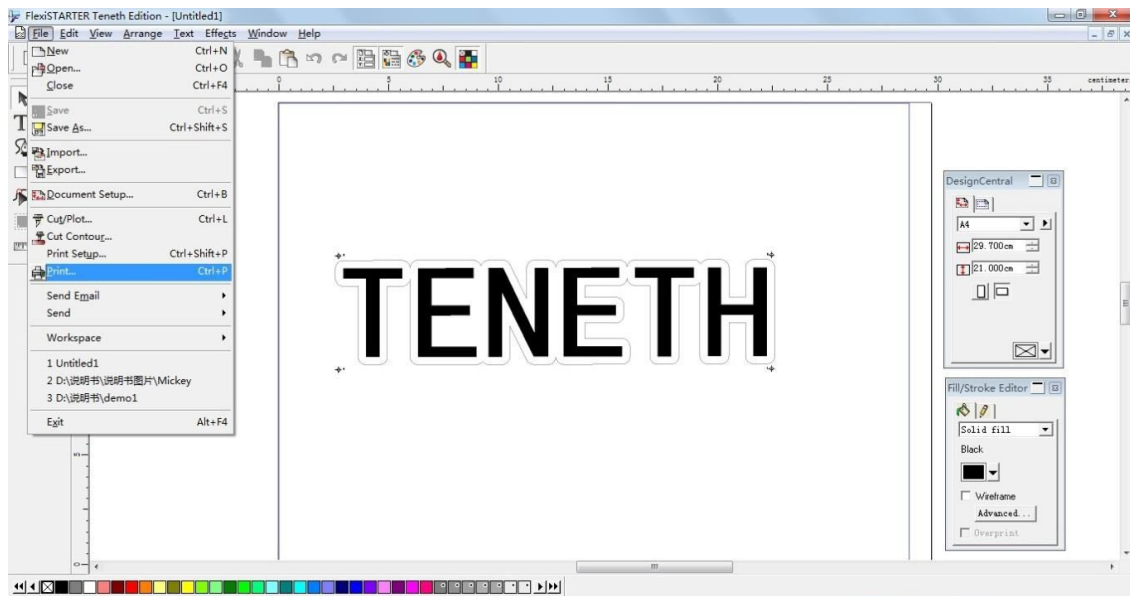
(4) Click **“Effects”->“Contour Cut Mark...”** to add a contour cut mark for the graphic file.



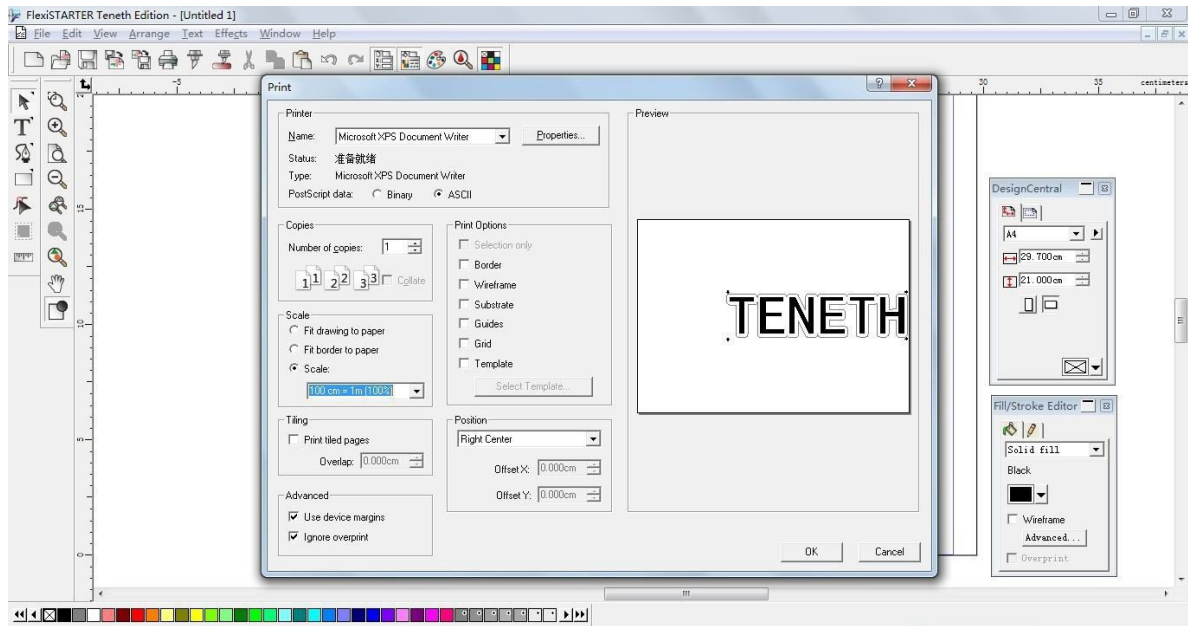
(5) Select **“4 Point”** in **“DesignCentral”** pop-up window, and then click .



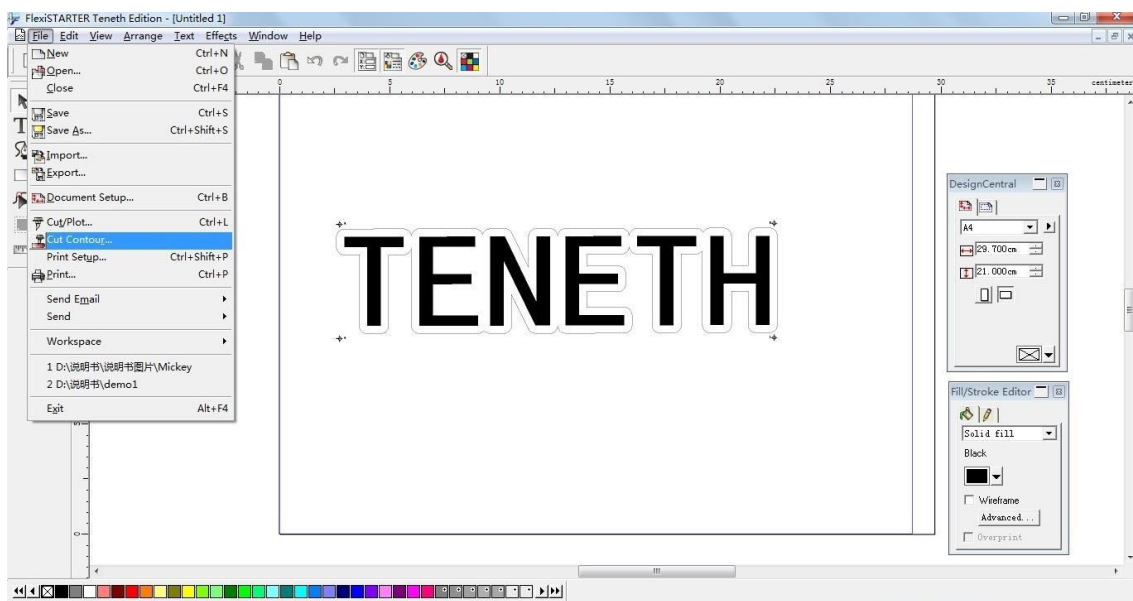
(6) Click file “**File**” -> “**Print**” to print the graphic file.



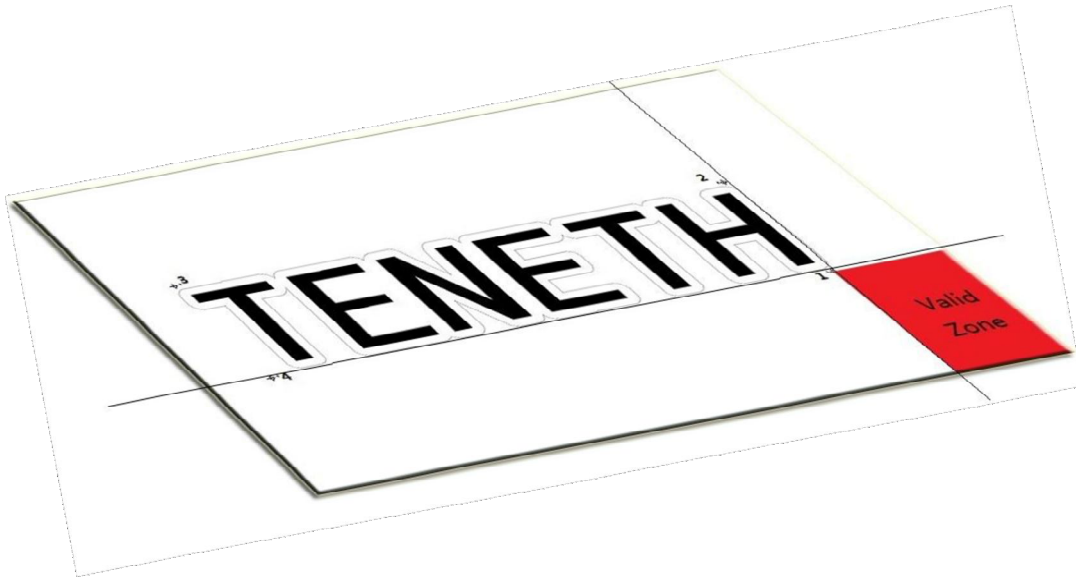
(7) In the “**Print**” window, there are some print options for your choice (e.g., if you want to print original size, just select “100cm = 1m [100%]”)



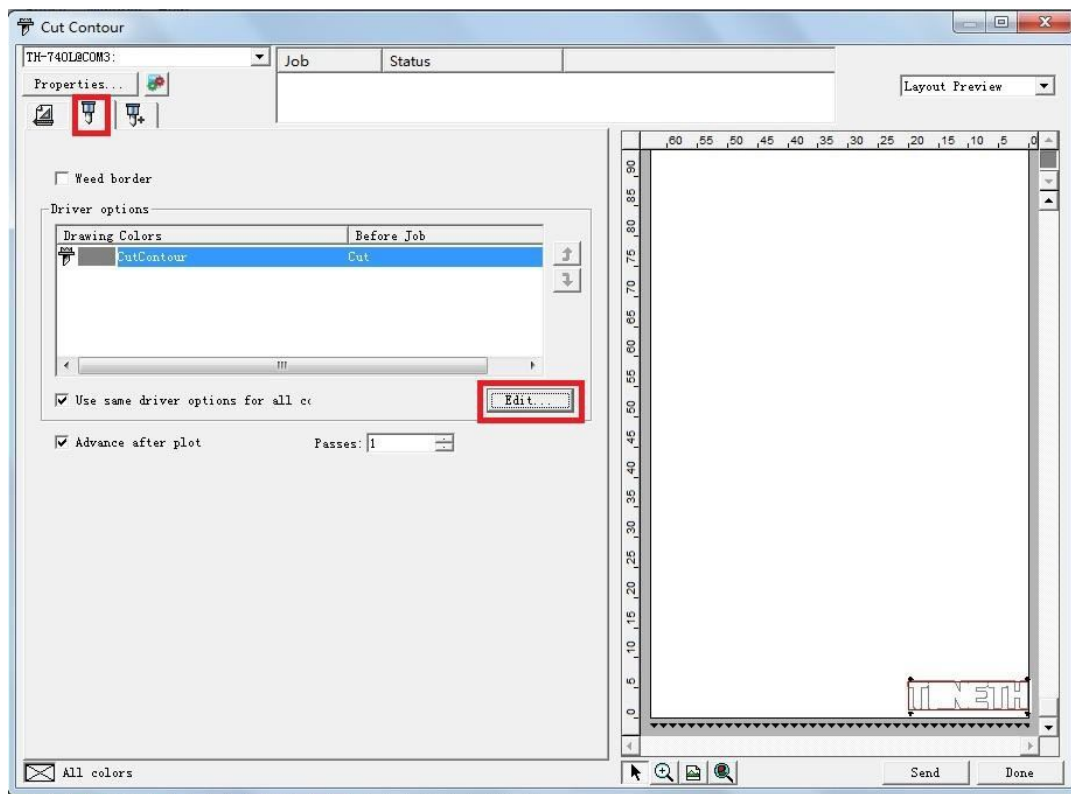
(8) Load the printed sheet on the plotter, and click file “File” -> “Cut Contour...”



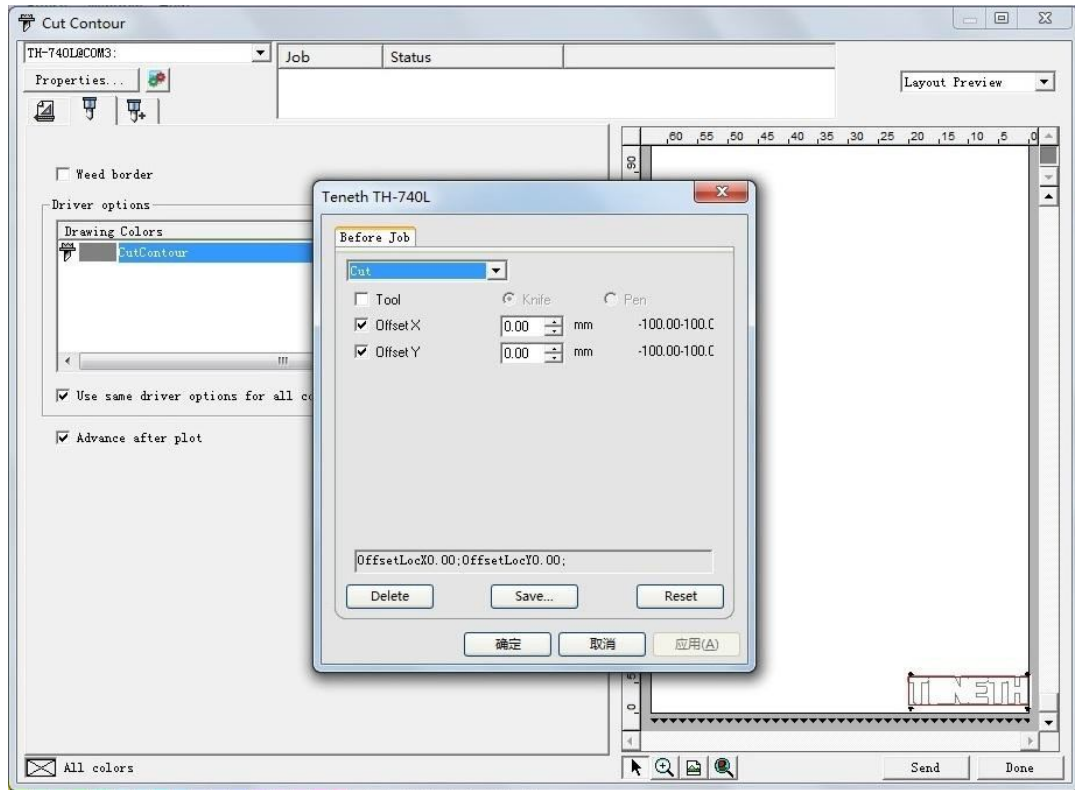
CAUTION: When loading the sheet, Be sure the red dot must be placed at the right side of first point, otherwise the plotter will not work normally, the **valid zone** is as shown below:



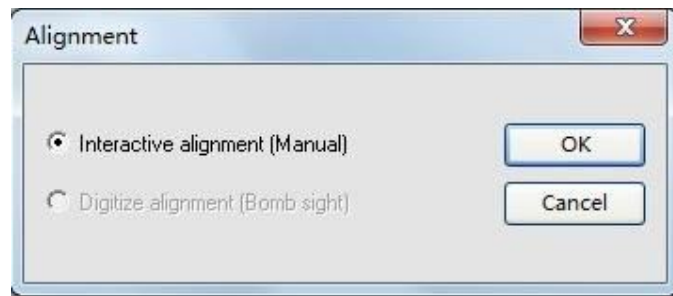
- (9) In “Cut Contour” window, select your plotter model, and click “Options” tab -> “Edit...” button.



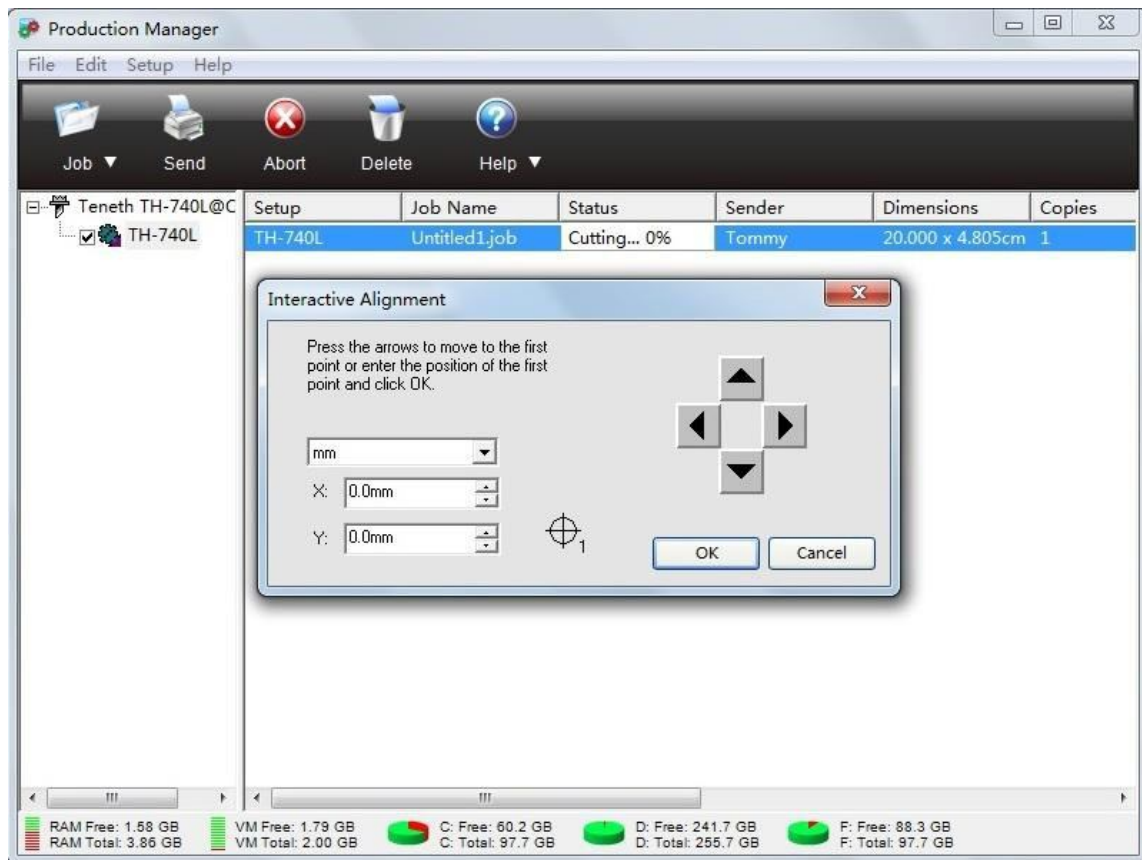
- (10) It will pop up a dialog box, please set the parameters **Offset X 0.00mm**, **Offset Y 0.00mm** as below, and click “Apply”-> “OK”.



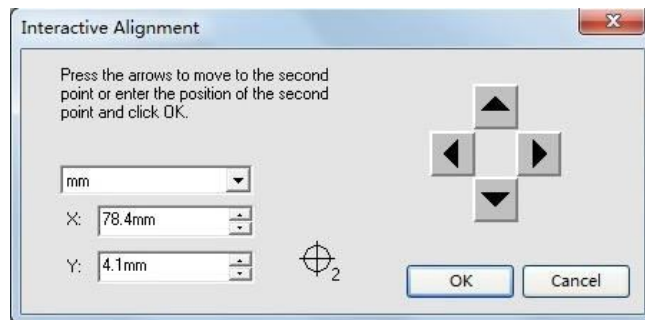
- (11) Then click **“Send”**, It will pop up a **“Alignment”** dialog box in **“Production Manager”** window, select **“Interactive alignment (Manual)”**, and click **“OK”**.



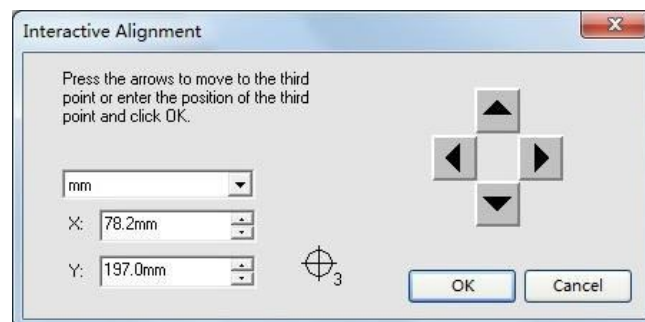
- (12) It will popup the first point dialog box, make the red dot of the plotter aim at the center of the mark by clicking 4 arrow keys, and then click **“OK”**.

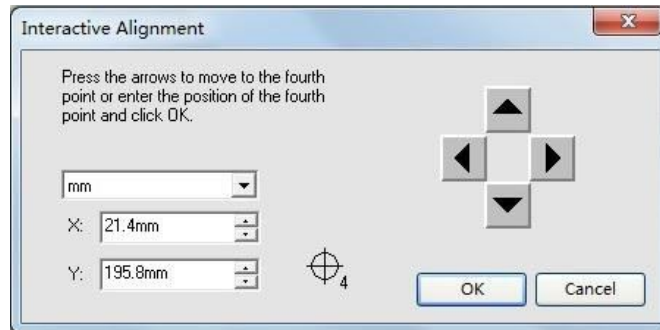



- (13) Then it will popup the second point dialog box, and At the same time, the red dot moves to the second point automatically, make the red dot of the plotter aim at the center of the second mark by clicking 4 arrow keys, and then click “OK”.



- (14) The operations for the third and fourth points are similar as above.



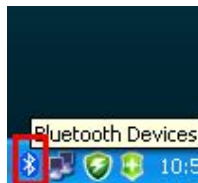


- (15) Then it will pop up a dialog box as blow, press Origin button  on control panel of plotter. And then press **"OK"**, the plotter will perform the contour cut.

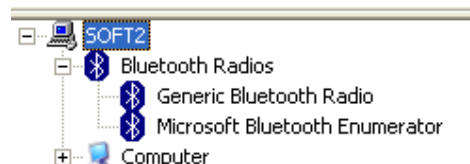


5.5 Wireless control (optional)

- (1) Insert the Bluetooth adapter into the USB port, The computer will automatically install the driver, you will see the **Bluetooth** icon in the taskbar.



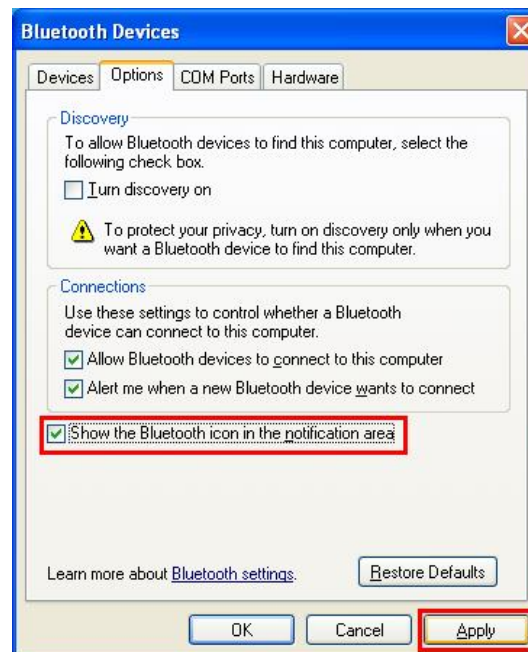
- (2) Then you can find the **"Bluetooth Radios"** in the **Device Manager**.



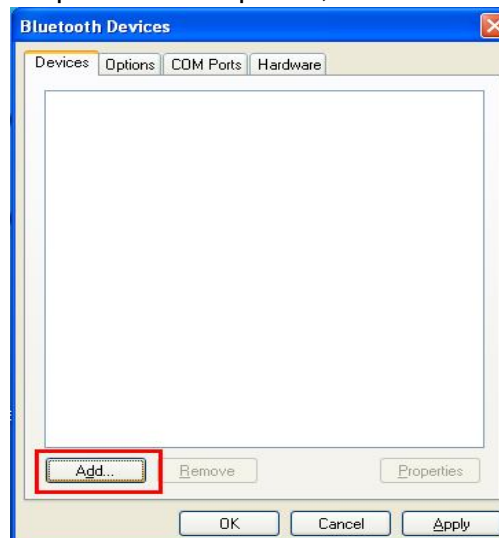
- (3) Right click the **Bluetooth** icon in the Taskbar and click **"Open Bluetooth Settings"**.



(4) Click “Options” tab when pop up the follow window, and select “Show the Bluetooth icon in the notification area” checkbox, then click “Apply”.



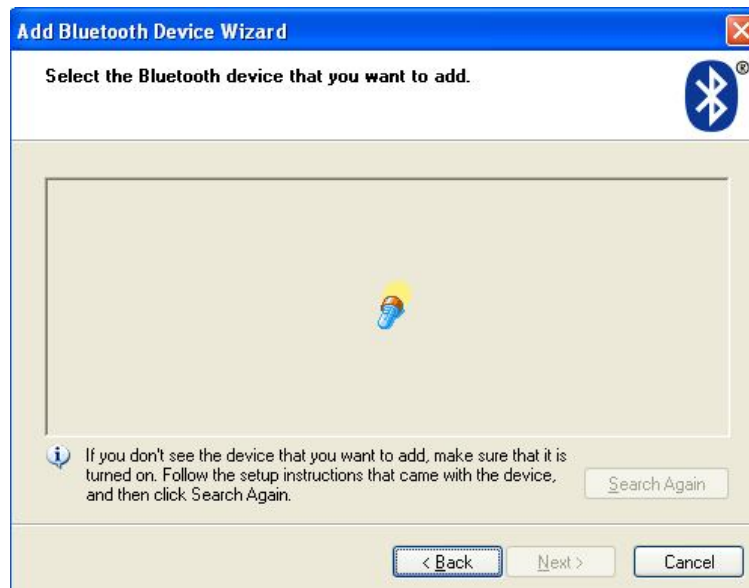
(5) To add the device, please power on the plotter, and click “Add” in the “Devices” tab.



(6) Select “**My device is set up and ready to be found**” in the pop up wizard, click “**Next**”.

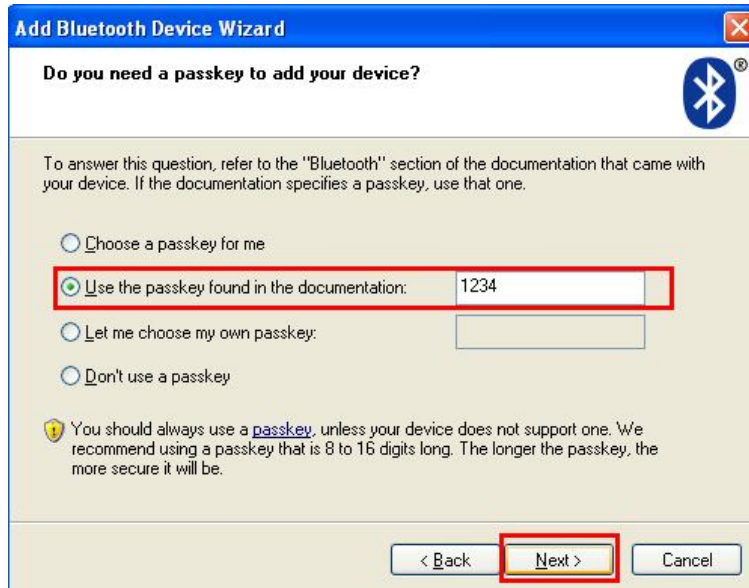


(7) Add Bluetooth Device Wizard will search the Bluetooth device.



(8) Then it will find Teneth TB plotter, choose TB plotter, and click “**Next**”.

(9) The Wizard will ask you whether use a passkey or not, select “**Use the passkey found in the documentation**”, then input the passkey in the textbox(The default passkey for TB series is 1234), then Click “**Next**”



- (10) The wizard will match and install the plotter.
:



- (11) When the wizard finish adding the Bluetooth device, please note down the Outgoing COM port (e.g. the outgoing port of below is COM6), Click “**Finish**” to complete the installation.



- (12) After finishing adding the Bluetooth device, you can use Teneth TB plotter to cut via cutting software.

Find More Information and Resources.

Please visit our Website: <http://www.teneth-cnc.com/>

If you have any questions, please contact us or email to admin@teneth-cnc.com.

Information in this document is subject to change without notice.

Reproduction of these materials in any manner whatsoever without the written permission of Teneth Inc. Is strictly forbidden.