

Sublimation Inkjet Printer

# TS34-1800A

# Mimaki™

Innovative and cost-effective system

## HIGHSPEED and CONTINUOUS PRINTING

High print speed of 32.0 sqm/h (Effective only at 4-color mode)

- Two New Piezo staggered heads
- Assures 18.6 sqm/h print speed in 6-color mode
- Draft print speed 91.3 sqm/h (360 dpi / 1 pass mode)

Further improvement of productivity  
by allowing continuous unmanned operation

- UISS, Uninterrupted Ink Supply System, is a standard feature
- Two liter aluminum packs and an automatic drying fan are equipped. (Options)



Flag



Banner



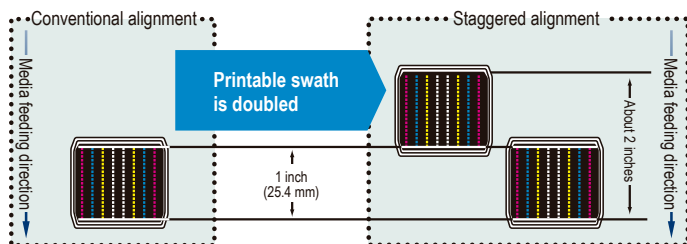
Sports Apparel

POINT  
1

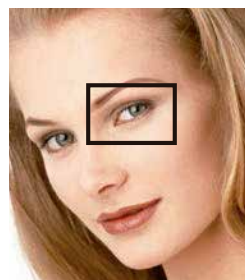
## Achieves high speed printing of up to 32.0 sqm/h

Two newly developed print heads are configured in a staggered pattern, which allows the end-users to quickly respond with increased speeds for wide-format soft signage with a productive high-speed print speed of 32.0 sqm/h in 4 color mode\*1.

\*1 32.0 sqm/h = 4 color, 540 x 720 dpi, Bi/Hi 18.6 sqm/h = 6 color, 540 x 720 dpi, Bi/Hi 91.3 sqm/h = 4 color, 360 x 360 dpi, Bi/Std



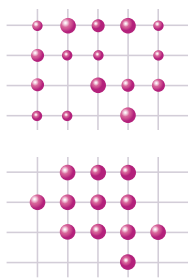
Improved ink jetting angle achieves higher print image quality without grainy appearance in 4-color mode by jetting variable size dots, Large, Medium and Small variable dots, with a maximum resolution of 1440 dpi.



Variable dot



Conventional dot

POINT  
2

## Enhancing productivity by allowing continuous unattended operation

UISS\*2 is standard equipment - Two ink cartridge holders are allocated for each color. When one ink cartridge indicates low ink level, this system automatically switches to the other one. Additionally, using in combination with the MBIS\*3 that supplies ink from aluminum ink packs(2L) extends the time of ink supply and reduces not only ink cost but also environmental footprint.

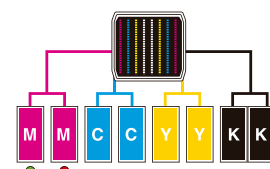
To further improve work efficiency, an automatic drying fan\*4 is offered to shorten the ink dry time and allows for continuous media take-up during high-speed printing.

\*2 UISS - Uninterrupted Ink Supply System: Automatic ink cartridge switching function (4-color mode only)

\*3 MBIS - Mimaki Bulk Ink System (Option)

\*4 Automatic drying fan is the option.

### UISS



When one ink cartridge runs out of ink, the indicator will light up red, while the system switches automatically to the second cartridge of the same color.

### MBIS



## New generation of output software with 16 bit rendering Sophisticated RIP maximizes the performance of TS34-1800A.

- Smooth gradation with less tone jump is achieved with 16 bit rendering.
- Versatile editing functions such as tiling, trimming, scaling, and rotating are provided.
- The web update function easily provides both software updates and profile downloads.

- Multiple images can be nested freely in the RIP.
- The software works in mixed Windows/Macintosh network environment.

RasterLink Pro 5<sup>TA</sup>

### Specifications

Item	TS34-1800A
Head	On-demand Piezo head (Array of 2 staggered print heads)
Print resolution	360, 540, 720, 1,440 dpi
Maximum width	1,900 mm
Ink	Kind
	Sublimation ink : Sb52 (BL/MY/K/LBL/LM)
	Sublimation ink : Sb53 (BL/MY/K/LBL/LM)
	Water-based pigment ink (C/M/Y/K/LC/LM)
Media	Supply system
	220 ml or 440 ml ink cartridge / 2 L ink pack
	Size
	210 mm ~ 1,910 mm (Thickness 1.0 mm or under)
	Weight
	25 kg or under
Take-up device	Roll outside diameter
	Φ 180 mm or under
	Roll inside diameter
	2 inch or 3 inch
Interface	Cutter
	Y-direction cutter after head section
Take-up device	Equipped with a roll take-up device, inside / outside selectable
Interface	USB 2.0
Power specification	AC 100 ~ 120 V, AC 200 ~ 240 V
Power consumption	360 W or under
Dimensions (W×D×H)	2,840 × 750 × 1,430 mm
Weight	210 kg

● Some of the samples in this catalogue are artificial renderings. ● Specifications, design and dimensions stated in this catalogue may be subject to change without notice (for technical improvements, etc.). ● The corporate names and merchandise names written on this catalogue are the trademark or registered trademark of the respective corporations. ● Inkjet printers print using extremely fine dots, so colors may vary slightly after replacement of the printing heads. Also note that if using multiple printer units, colors could vary slightly from one unit to other unit due to slight individual differences.

### Supplies & Options

Item	Item No
Sublimation ink Sb52	440 ml ink cartridge SPC-0584BL / M / Y / K / LBL / LM
2 L ink pack *1	SPC-0585BL / M / Y / K / LBL / LM
Sublimation ink Sb53	440 ml ink cartridge SB53-BL / M / Y / K / LBL / LM-44
2 L ink pack *1	SB53-BL / M / Y / K / LBL / LM-2L
Water-based pigment ink	220 ml ink cartridge SPC-0494C / M / Y / K / LC / LM / LK
Drying fan 180	OPT-J0313
Sublimation option for TS34-1800A *2	OPT-J0329
MBIS2 (Mimaki Bulk Ink System)	OPT-J0305

\*1: 2 L ink packs can be used with MBIS, Mimaki Bulk Ink System (Option).

\*2: Fan unit for prevention of ink mist.

**Celupal**

● ● ● ● DISTRIBUIDOR LÍDER EN PAPELES, PLOTTERS E INSUMOS

**Celupal Internacional,  
S. de R.L. de C.V.**  
Calle Tiro #53, Parque Industrial Neaulcapán  
C.P. 533370, Neaulcapán, Edo. de México  
Tel. (55) 2625-2990/800 000 CELU (2358)  
info@celupal.com

**Sucursal Guadalajara**  
Matías Romero #1141, Cd. San Carlos  
C.P. 44460, Guadalajara, Jal.  
Tel. (33) 3619 5046  
guadalajara@celupal.com

**Sucursal Monterrey**  
Pablo A. González Garza #811 (Pleteras)  
Cd. Nuevas Sur, C.P. 64020, Monterrey, N.L.  
Tel. (44) 2340 7722/23, (44) 2340 7080  
monterrey@celupal.com

**Sucursal Querétaro**  
Prol. Correidora Nte. #1220 Arboledas del  
Parque Querétaro, Qro. C.P. 76140  
Tel. (44) 2340 7722/23, (44) 2340 7080  
queretaro@celupal.com

**Sucursal Toluca**  
Calle Emilio Zapata No. 79  
Cd. "El Carmen" Toluca  
Municipio de Toluca Estado de México  
Tel. (722) 283 1039, (722) 283 1042  
toluca@celupal.com

**Sucursal, Mérida**  
Calle 17 No. 316, Manzana 8 Ciudad  
Industrial, Mérida, Yucatán  
Tel. (999) 946 0908  
merida@celupal.com

**Sucursal, Algarín**  
Bolívar #505 Local B, colonia Algarín,  
Delegación Guadalupe, D.F. C.P. 06680  
Tel. (55) 5530 4456 / 5519 2189  
algarin@celupal.com



Our factory is certified according to ISO14001:2004

## MIMAKI ENGINEERING CO., LTD.

2182-3 Shigeno-otsu, Tomi-city, Nagano 389-0512, Japan  
Tel: +81-268-78-2288  
trading@mimaki.jp www.mimaki.co.jp

## MIMAKI USA, INC.

150 Satellite Boulevard, suite A, Suwanee, Georgia 30024, U.S.A  
Atlanta +1-888-530-3988 Boston +1-888-530-3986  
Los Angeles +1-888-530-3987 Chicago +1-888-530-3985  
www.mimakiusa.com

## MIMAKI EUROPE B.V.

Stammerdijk 7E,  
1112 AA Diemen, The Netherlands  
Tel: +31-20-4627-640  
www.mimakieurope.com @MimakiEurope