

JFX500-2131



Ultra-high speed UV LED printer



Mimaki



the power to

create

Mimaki

Ultra-high speed, high precision flatbed UV LED printer

Setting new standards in Grand Format UV Flatbed printing... The new JFX 500-2131 establishes new performance benchmarks in the sector in terms of speed, flexibility and environmental sustainability. With speeds of up to 645 ft²/h the new machine is 2.5 times faster than previous JFX printers from Mimaki and will revolutionize the world of sign and graphics and wide format display with the outstanding capability to print down to 2 point text with stunning clarity.

JFX 500-2131 delivers ...

- Amazing print speeds up to 645 ft²/h with CMYK and 484 ft²/h with white ink printing
- Maximum print size of 7 ft x 10 ft
- Intelligent Microstepping System (IMS) for accurate prints, even 2 pt characters can be legibly printed
- Variable dot printing with a minimum size of 4 picolitre
- Mimaki Advance Pass System reduces bandings
- Mimaki Circulation Technology prevents pigment sedimentation of white ink
- Reliable nozzle recovery function
- Vacuum unit and high performance Rasterlink RIP software included as standard

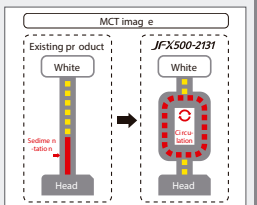
UV LED CURABLE
645 ft ² /h MAX. PRINT SPEED
83 in x 122 in MAX. PRINT AREA
1200dpi MAX. RESOLUTION
2 in MAX. MEDIA THICKNESS
FLEXIBLE/HARD INK OPTIONS
4 COLORS + WHITE

JFX500-2131

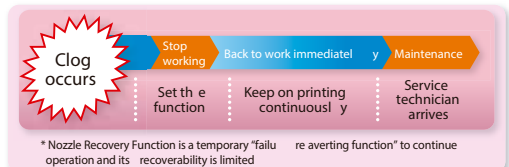


Easy Maintenance

- Mimaki Circulation Technology; prevents pigment sedimentation of white ink and provides stable ink-jetting. Thus, it also contributes to reduction of ink waste, supporting environmentally friendly applications.



- Nozzle recovery function; even when nozzle washing has no effect on troubled nozzles, the print image quality can be recovered temporarily. *Nozzle Recovery Function is a temporary failure averting function and its recoverability is limited.

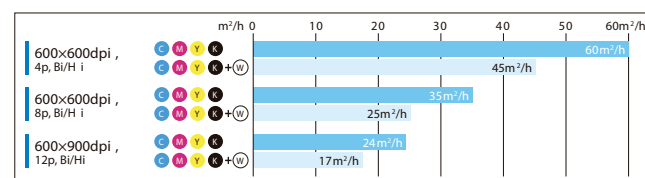


Create ... Large format signage & graphics where the highest quality image definition is the main priority, including exhibition graphics, interior decor panels, creative displays and much more...

KEY TECHNICAL FEATURES ...

High Speed Print

Equipped with the new developed print head (6 print heads with 3 staggered configuration), the JFX500-2131 achieves print speed up to 60 sqm/h.



Print speed may vary depending on the substrate.

Multiple ink options

The newly formulated LUS-150 ink offers improved curing times resulting in a less tactile sticky feeling and it is flexible up to 150%. The JFX500-2131 also operates with Mimaki's LH-100 inks.

Type	4-colour High Speed Ink LUS-150 [NEW]	4-colour Vivid Ink LH-100
Color	C M Y K + W	C M Y K + W
Features	Newly developed UV ink offers a 150% flexibility while providing a lower operational costs during high-speed UV printing.	Hard UV ink with higher scratch and chemical resistance as well as colour reproduction.
Flexibility	Good	None

*1 LUS = LED UV Stretchable Ink
*2 Ink flexibility of LUS-150 may vary according to the substrate, please test your substrate in advance.
*3 JFX500-2131 may not take full advantage of its print speed with LH-100.

Mimaki Advanced Pass Systems (MAPS)

This facility applies a gradational mask pattern to the printing process ensuring that UV curing is performed more gradually, thereby reducing 'banding'.

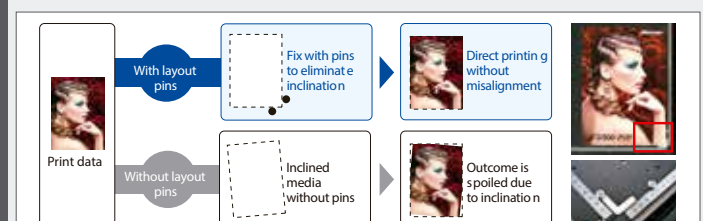
*when using MAPS - print speed is reduced by approx. 10%



Easy operations

Layout pins eliminate alignment problems

The machine is equipped with pins and a scale to ensure accurate substrate alignment on the flatbed. By fixing the substrate to the pins, checking the placement against the scale and then editing the design data or printer setting accordingly, all alignment problems are eliminated.



Sophisticated RIP software maximizes the performance of JFX 500-2131

Raster Link6 Additional useful functions

User friendly RIP key features

- Easy to follow icons enable intuitive and user-friendly operation
- Related settings feature in one window to simplify RIP operations, with 'Register as Favorite' option available for regularly used layouts
- Printing progress can be monitored on the main screen

1. Three ink layers in one pass print function

A three-layer print of color, white and color can be performed at one time. Printing a base layer 'underlay' of white ink allows perfect reproduction of beautiful natural colors when printing on transparent media. Window graphics can be printed with high precision and no multi-pass color registration shift.

2. Layout function

Three ink layers or copied images are freely laid out if print conditions remain the same. This function reduces the media waste by efficient layout.

3. Multi-profile, simultaneous printing function

Several profiles that match conditions can be simultaneously printed. This is particularly useful for test output when the profile for a target image quality or color requires multiple 'profile' test prints.

*To be supported by RasterLink6 program update.

Supports Web update function. Supports the Web update function that has been well-received in RasterLinkPro5. Program update and profile download can be easily performed via internet.

Specifications

Item		JFX500-2131
Head		On-demand Piezo head (6 printheads with 3 staggered configuration)
Print resolution		600 X 600 dpi, 600 X 900 dpi, 900 X 1,200 dpi, 1,200 X 1,200 dpi
Ink	Type	UV curable ink : LUS-150 (C, M, Y, K, W) (NEW) UV curable ink : LH-100 (C, M, Y, K, W)
	Supply system	Supplied by 2L Ink Station
	Ink combination	2 x 4-colour, 4-colour + White
	Ink circulation (*1)	White ink circulation by MCT (Mimaki Circulation Technology)
	Ink degassing module	Equipped with MDM (Mimaki Degassing Module)
Maximum print size (W X D)		82.7" X 122"
Media	Size (W X D)	82.7" X 122"
	Height	Max. 2"
	Weight	Less than 110.2 lbs. / ft ²
Media table		Air suction by vacuum
Print accuracy	Absolute accuracy	± 0.01" or ± 0.3% from specified print distance
	Repeatability	± 0.01" or ± 0.1% from specified print distance
UV unit		Equipped with UV LED (Light Emitting Diodes)
Interface	Lifetime (*2)	About 5,000 hours
		USB2.0
Applicable standard		VCCI class A, CE Marking, CB Report, UL, RoHS Directive
Power specifications		AC 200 – 240 V, 50/60 Hz
Power consumption		Less than 2.4 kVA
Operational environment	Temperature	59 – 86 °F
	Humidity	35 – 65 %Rh
	Temperature accuracy	64.4 – 77 °F
	Temperature gradient	Less than ± 18 °F/h
	Dust	Equivalent to normal office level
Dimensions (W X D X H) (*3)		165.4" X 185.4" X 59.4"
Weight (*3)		3,086.4 lbs.

*1 MCT works only with white ink.
*2 Reference value. There is no guarantee as to the lifetime.
*3 Ink Station is not included in the dimensions and the weight.
*4 RasterLink6 and the standard vacuum unit are bundled with the JFX500-2131.

Supplies

Item	Colour	Item No.	Remarks
LUS-150 (NEW)	Cyan	TBD	Ink bottle
	Magenta		
	Yellow		
	Black		
	White		
LH-100	Cyan	TBD	
	Magenta		
	Yellow		
	Black		
	White		

- Every UV ink is sold by the liter. Please put it into the Ink Station.
- As ink flexibility of LUS-150 may vary according to the substrate, please test your substrate in advance.
- JFX500-2131 may not take full advantage of its print speed with LH-100.

Options

Item	Item No.	Remarks
Ionizer kit	TBD	For electrostatic removal
Vacuum unit (3 φ . 200)	OPT-J0216	3-phase : 200 . 240 V, 30 A, 3.4 kW
Vacuum unit (1 φ . 200)	OPT-J0217	1-phase : 200 . 240 V, 30 A, 1.9 kW
Vacuum unit (3 φ . 400)	OPT-J0232	3-phase : 380 . 480 V, 20 A, 3.4 kW
IF unit for external vacuum	OPT-J0202	

- Additional power source is required in order to use the vacuum unit.
- Each vacuum unit includes IF units for external vacuum (OPT-J0202).

Inks and substrates:

- Please note that properties and adhesion, weather resistance etc. of ink and substrates can vary. Therefore please test materials before printing.
- Some substrates require primer before printing. Please test materials beforehand or ask your sales representative.

Safety notice:

You are dealing with UV light sources that may harm your health.

Please follow below guidelines strictly:

- Do not look directly into the UV light source nor place your hand, or expose your skin directly to the UV light source.
- Depending upon print mode, there might occur some VOC emittance from printed parts not yet cured and hardened
- In addition, please read the instructions and guidelines of the manual carefully and follow those.

Some of the samples in this folder are artificial renderings - Specifications, design and dimensions stated in this folder may be subject to change without notice (for technical improvements, etc.)
The corporate and merchandise names written on this folder are the trademark of the respective corporations - Inkjet printers print using extreme fine dots, so colors may vary after replacement of the printing heads, also note that if using multiple printer units, colors could vary slightly from one unit to other unit due to slight individual differences - Editor's errors reserved.



DISTRIBUIDOR LÍDER EN PAPELES, PLOTTERS E INSUMOS

Celupal Internacional, S. de R.L. de C.V. Calle Tres #53, Parque Industrial Naucalpan C.P. 533370, Naucalpan, Edo. de México Tel. (55) 2825-2990/800 000 CELU (2358) info@celupal.com	Sucursal Guadalajara Matias Romero #1144, Col. San Carlos C.P. 44480, Guadalajara, Jal. Tel (33) 3619 5046 guadalajara@celupal.com	Sucursal Monterrey Pablo A. González Garza #811 (Fleteros) Col. Mitras Sur, C.P. 64020, Monterrey, N.L. Tel/Fax: (81) 1936 6074 monterrey@celupal.com	Sucursal Querétaro Pról. Corregidora Nte, #1220 Arboledas del Parque Querétaro, Qro, C.P. 76140 Tel. (44) 2340 7722/23, (44) 2340 7080 queretaro@celupal.com	Sucursal Toluca Calle Emiliano Zapata No. 79 Col. "El Carmen" Totoltepec Municipio de Toluca Estado de México Tel. (722) 283 1039, (722) 283 1042 toluca@celupal.com	Sucursal Mérida Calle 17 No. 316, Manzana 8 Ciudad Industrial, Mérida, Yucatán Tel. (999) 946 0908 merida@celupal.com	Sucursal, Algarín Bolívar #505 Local B, colonia Algarín, Delegación Cuauhtémoc, D.F. C.P.06680 Tel. (55)5530 4456 / 5519 2189 algarin@celupal.com
--	---	--	---	--	--	--

