

# IEEE1394 Driver Install Guide

This guide explains the IEEE1394 driver installation procedure.

IEEE1394 driver must be installed on the computer to use the IEEE1394 interface. (IEEE1394 cable is sold separately)

Read the guide carefully before installing the IEEE1394 driver.

The method of installation differs according to the operating system of the computer. Refer to the page explaining how to install the driver in your operating system.

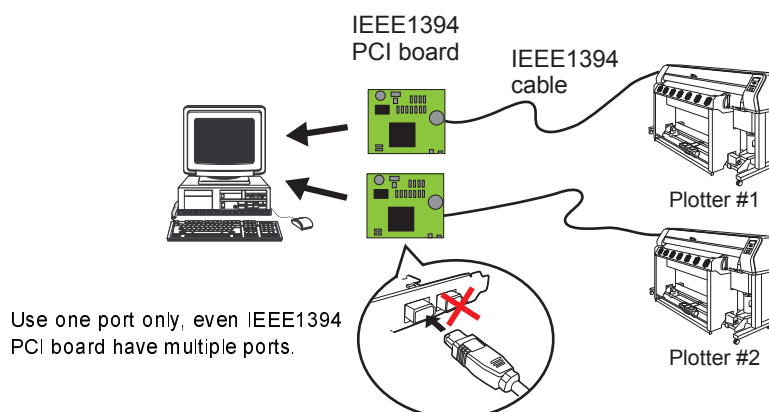
**Windows 2000/XP**

→ P.3




**Windows Vista**

→ P.11

## Multiple plotter connection figure



## Caution

	<b>Follow the below conditions to use</b>
	<ul style="list-style-type: none"><li>• When output the same data to multiple plotters at the same time, enough output performance may not be obtained. Follow the specification of the application.</li><li>• Turn off the computer first, before turning off the plotter.</li></ul>
	<b>Do not use under the below environment</b>
	<ul style="list-style-type: none"><li>• Connect to the plotter via IEEE1394 hub.</li><li>• Connect multiple plotters to one IEEE1394PCI board or one IEEE1394PC card.</li><li>• Connect multiple computers.</li><li>• Connect other IEEE1394 device at a time.</li><li>• Use the IEEE1394 cable longer than 4.5m.</li><li>• Use the own made or remodeled computer.</li></ul>
	<b>Never do the following performance</b>
	<ul style="list-style-type: none"><li>• Insert or remove the IEEE1394cable, or turning ON/OFF the plotter when application for data output is activated.</li><li>• Insert or remove the cable, or turning ON/OFF the plotter during the driver installation.</li><li>• Insert and remove the cable, or turning ON/OFF the plotter during data transfer.</li><li>• Insert and remove the IEEE1394cable continuously at short intervals.</li><li>• Shutdown, reboot, suspend, sleep or hibernation during data transferring.</li></ul>

## Notes

- Do not copy this manual in whole or parts in any form without prior approval from Mimaki.
- Do not copy this software to any other disk for the purpose of other than making a backup disk or load it in memory for the purpose of other than execution.
- Except for the damages prescribed in Warranty Notes of Mimaki Engineering Co., Ltd., Mimaki Engineering Co., Ltd. assumes no responsibility for effects (including loss of income, indirect damages, special damages, or other financial damages) resulting from the use or non-use of the product.

# Driver Installation Guide for Windows 2000 / XP

## System Requirements

The following conditions are required to use IEEE1394 driver.

Computer	IBM PC or compatible PC with built-in IEEE1394 port <sup>*1</sup>
OS	Microsoft® Windows® 2000 Professional (service pack 2 or later) Microsoft® Windows® XP <sup>*1</sup> <sup>*2</sup> Professional / Home Edition
CPU	PentiumII 300MHz or higher <sup>*3</sup>
Memory	128MB or more <sup>*3</sup>
Plotter	Mimaki plotters supplied with IEEE1394 port (JV4/JV3/JV22/TX2/TX3/DM2/DM3/GP/UJV/UJF series)
Number of protter connectable <sup>*4</sup>	1 to 4 <sup>*5</sup> <sup>*6</sup>

<sup>\*1</sup> : Toward a IEEE1394PCI board, or a IEEE1394 PC card. Only one plotter can be connected (Even though IEEE1394 PCI board have multiple IEEE1394 port). To connect multiple plotter to one computer, IEEE1394PCI board or IEEE1394 PC card will be needed same number as plotter.

<sup>\*2</sup> : 64 bitOS (x64 Edition) is not supported.

<sup>\*3</sup> : When output the same data to multiple plotters at the same time, enough output performance may not be obtained depend on the use environment. Confirm the specification of the application.

<sup>\*4</sup> : The number of plotter able to connect to one computer.

<sup>\*5</sup> : Connectable plotter number may limited less than four depending on the computer specification of boardable number of IEEE1394 PCI board or a IEEE1394 PC card.

<sup>\*6</sup> : To connect multiple plotters to one computer, the application should support the multiple plotter connection. Confirm the specification of the application.

# Installation Procedure



- Start the driver installation in the condition of IEEE1394 cable is not connected.
- Do not connect the IEEE1394 cable during the installation otherwise installation may not complete normally.

:Install the driver first time

→ Go to 3. Install The Driver First Time(page 7)

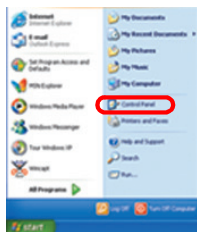
:To upgrade the driver version

→ Go to 1. Confirm The Driver

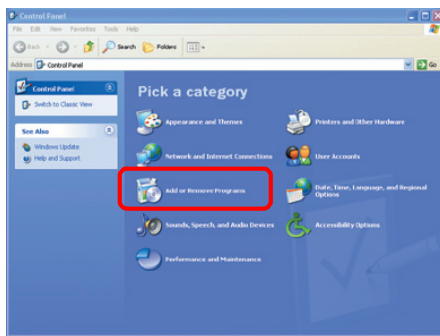
## 1. Confirm The Driver

\*Windows XP screen is used on this manual

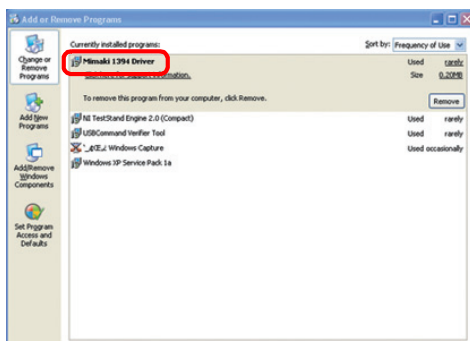
### 1 Click [Start], and select [Control Panel].



### 2 Click [Add or Remove Programs].



### 3 Find the “Mimaki 1394 Driver”.



:If “Mimaki 1394 Driver” exist

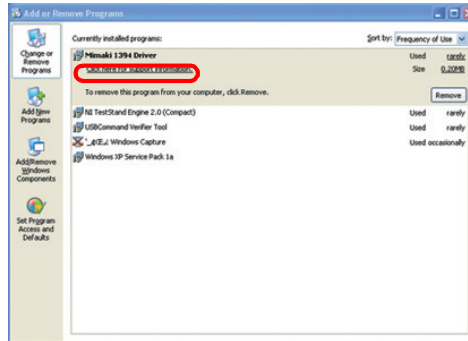
→ Go to next step 4

:If “Mimaki 1394 Driver” not exist \*1

Go to **3. Install The Driver First Time**(page 7)

\*1 In this case, either IEEE1394driver is not installed or installed driver version is before 1.50

## 4 Select “Mimaki 1394 Driver”, and click [Click here for support information].



## 5 Confirm the current driver version.



: If installed driver version is old

→ Go to next step 6

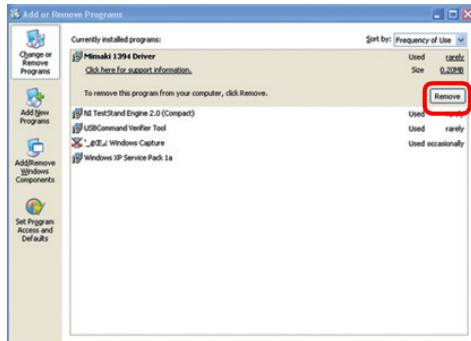
: If installed driver version is latest

→ Do not need to install the driver.

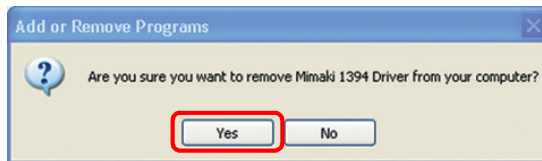
## 6 Click Close.

## 2.Uninstall The Existing Driver.

- 1 At the [Add or Remove Programs], Select “Mimaki 1394 Driver” and click **Remove**.




- 2 Click **Yes**.



Driver uninstallation is performed automatically.

- 3 After uninstallation complete, restart the computer.



CAUTION

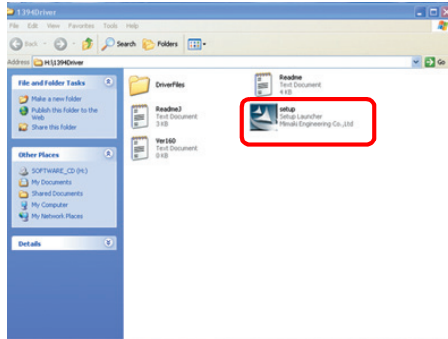
- If did not restart the computer, driver installation may not performed collectly

### 3.Install The Driver First Time

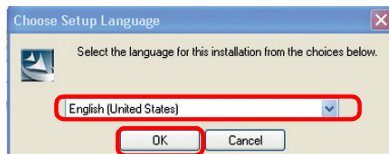


- Make sure that IEEE1394 cable are not connected

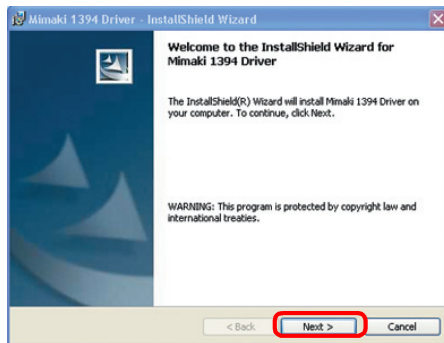
#### 1 Double click the [setup.exe(setup)].



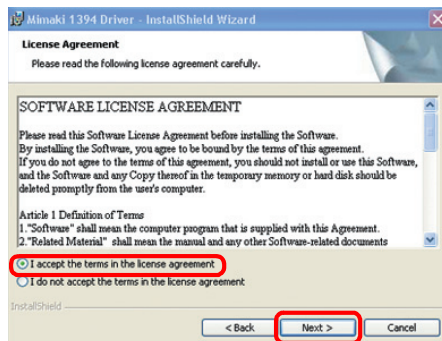
#### 2 Select the language and click [OK].



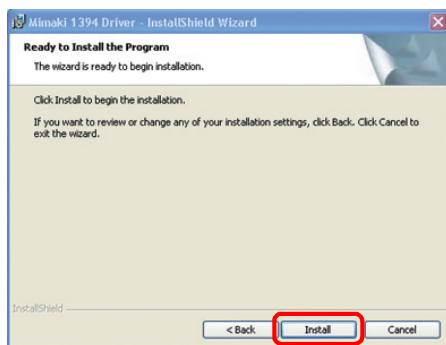
#### 3 Click [Next].



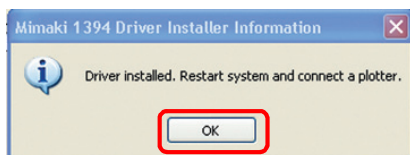
#### 4 Check “I accept the terms in the license agreement”, then click [Next].



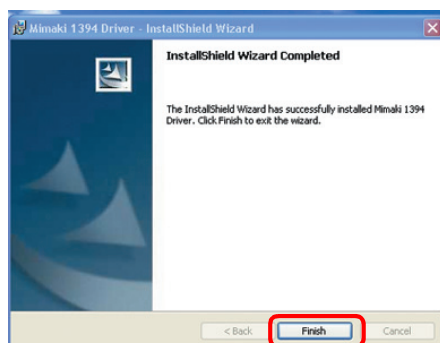
5 Click **Install**.



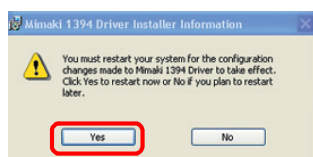
6 Click **OK**.



7 Click **Finish**.



8 Click **Yes**.



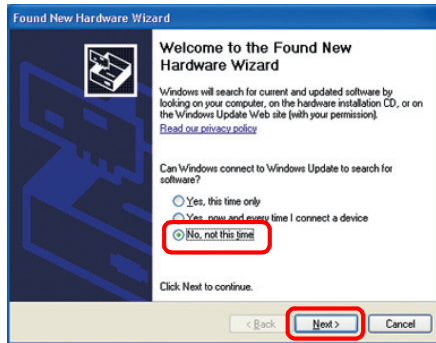
9 After restarting the computer, connect the plotter and computer via IEEE1394 cable and turn on the plotter.

#### 4.Connectting Plotter (Windows XP users only)

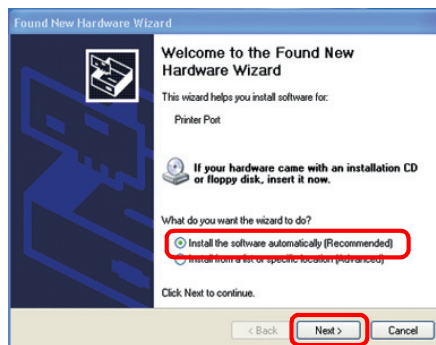
\* Windows XP operating system needs following procedure.

When connect the plotter and computer, below wizard is displayed.

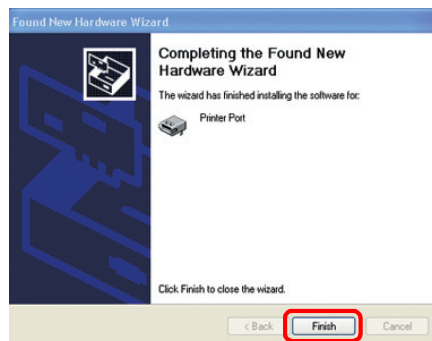
- 1 If below dialog box appears, select “No, not this time” and click **Next**.  
\*This dialog box appears on the XP service Pack2 only.



- 2 Select “Install the software automatically(Recommended)” and click **Next**.

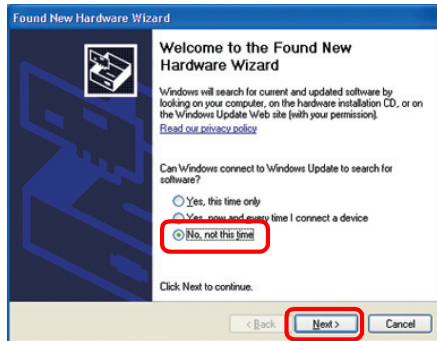


- 3 Click **Finish**.

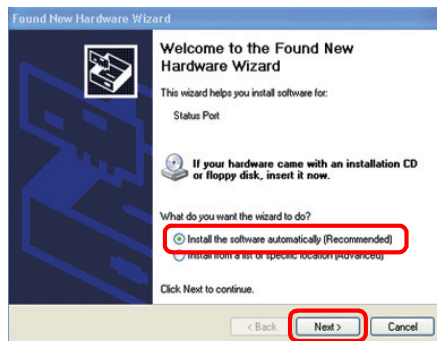


**4** If below dialog box appears, select “No, not this time” and click **Next**.

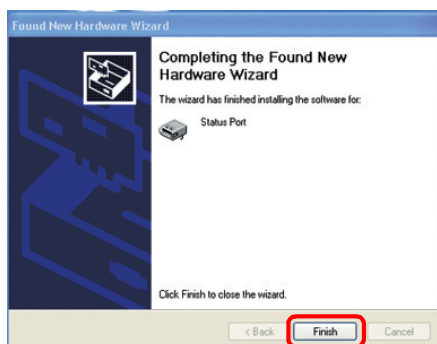
\*This dialog box appears on the XP service Pack2 only.



**5** Select “Install the software automatically(Recommended)” and click **Next**.



**6** Click **Finish**.



# Driver Installation Guide for Windows Vista

## System Requirements

The following conditions are required to use IEEE1394 driver.

Computer	IBM PC or compatible PC with built-in IEEE1394 port <sup>*1</sup>
OS	Microsoft® Windows Vista™ Home Basic (32bit/64bit) / Home Premium (32bit/64bit) / Business (32bit/64bit) / Enterprise (32bit/64bit) / Ultimate (32bit/64bit)
CPU	Intel/AMD CPU 1GHz or more <sup>*2</sup> <sup>*3</sup>
Memory	512MB and above (Home Basic), 1GB and above (other than Home Basic) <sup>*3</sup>
Plotter	Mimaki plotters supplied with IEEE1394 port
Number of protter connectable <sup>*4</sup>	1 to 4 <sup>*5</sup> <sup>*6</sup>

<sup>\*1</sup> : Toward a IEEE1394PCI board, or a IEEE1394 PC card, Only one plotter can be connected (Even though IEEE1394 PCI board have multiple IEEE1394 port). To connect multiple plotter to one computer, IEEE1394PCI board or IEEE1394 PC card will be needed same number as plotter.

<sup>\*2</sup> : Except the Intel Itanium processor.

A CPU with 64-bit support when using a 64-bit operating system.

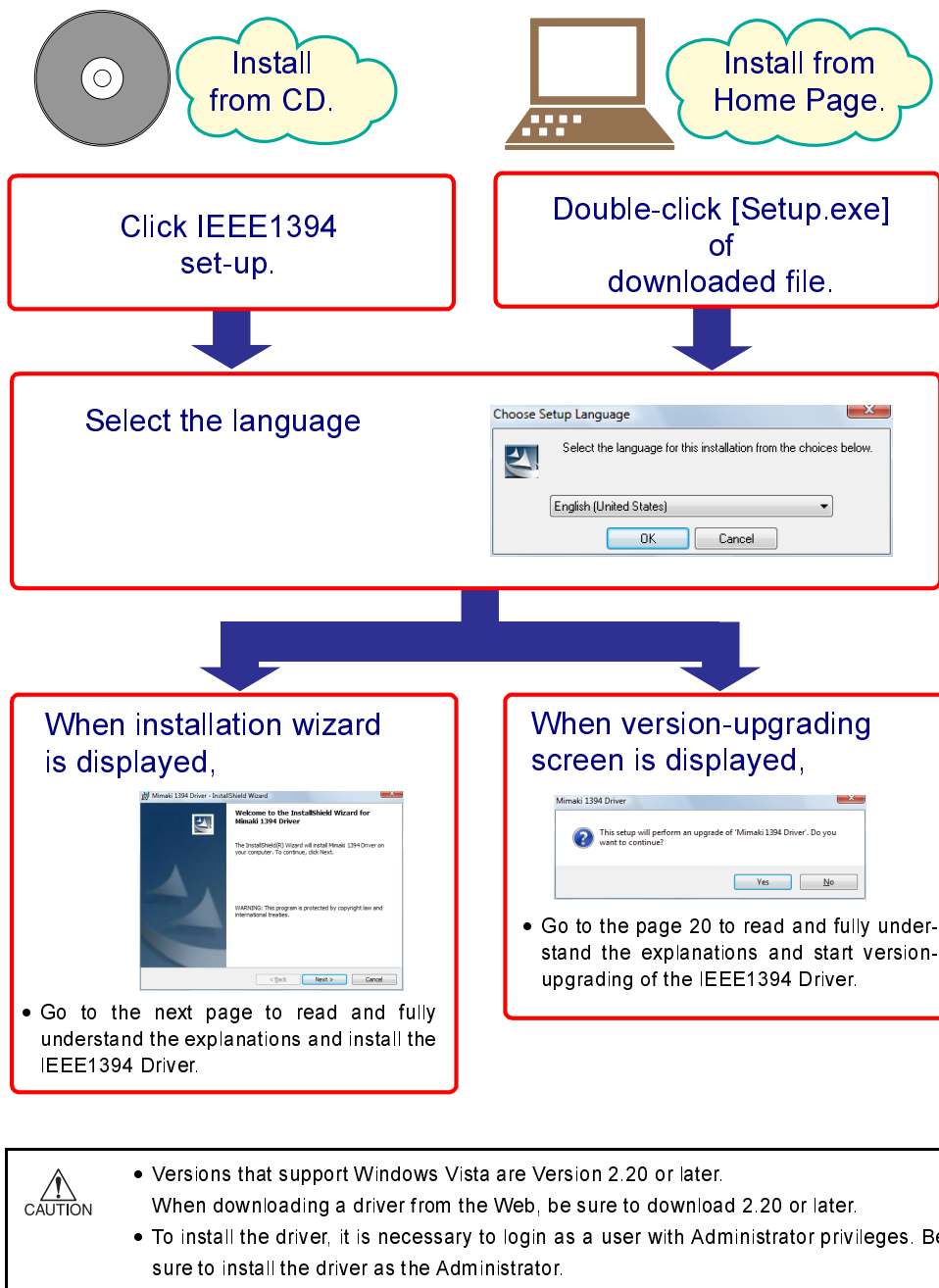
<sup>\*3</sup> : When output the same data to multiple plotters at the same time, enough output performance may not be obtained depend on the use environment. Confirm the specification of the application.

<sup>\*4</sup> : The number of plotter able to connect to one computer.

<sup>\*5</sup> : Connectable plotter number may limited less than four depending on the computer specification of boardable number of IEEE1394 PCI board or a IEEE1394 PC card.

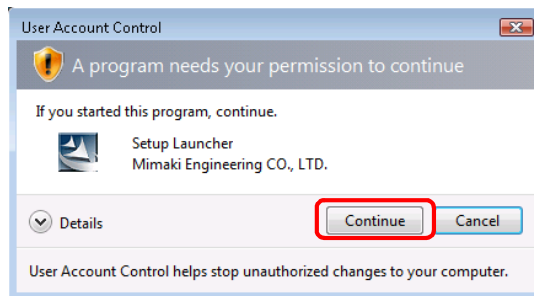
<sup>\*6</sup> : To connect multiple plotters to one computer, the application should support the multiple plotter connection. Confirm the specification of the application.

## Installation flow



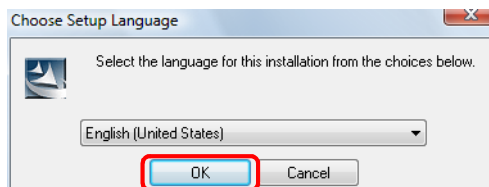
## Installation procedure

- 1 Remove a IEEE1394 cable that connects plotter and computer.**
  - Keep the IEEE1394 cable unconnected during installation to complete the installation properly.
- 2 Insert the CD-ROM in the disk drive and click IEEE1394 Driver Setup in the activated menu screen.**
  - When you downloaded from the Home Page, double-click [Setup.exe].
- 3 Display the User Account Control screen. Check that the issuer is Mimaki and click Continue.**

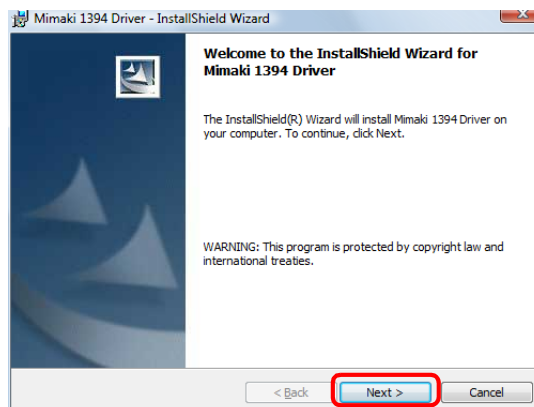


- You may be asked to enter the Administrator password. In this case, enter the Administrator password and go on to the next step.

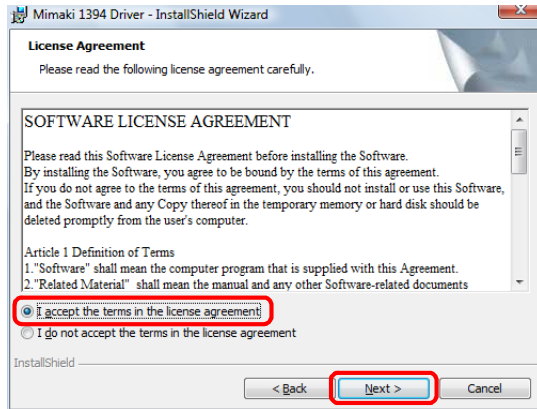
- 4 Select the language and click OK.**



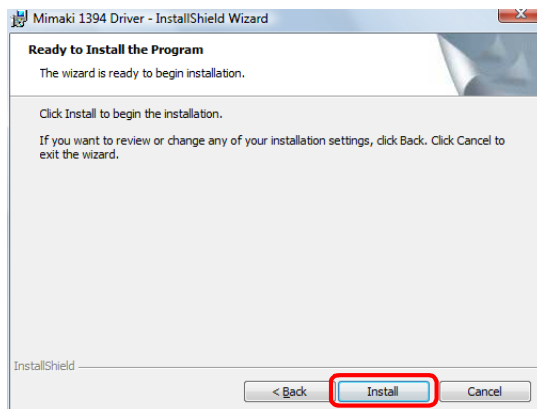
- 5 Install wizard activates. Click Next.**



- 6 Software License Agreement screen appears.**  
**Read the agreement carefully, and check [I accept the terms in the license agreement] to agree the agreement.**  
**Click [Next] .**

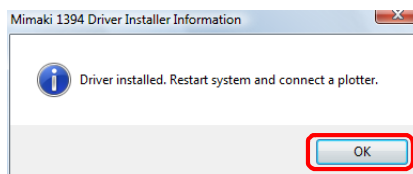


- 7 Click [Install] to start installation.**



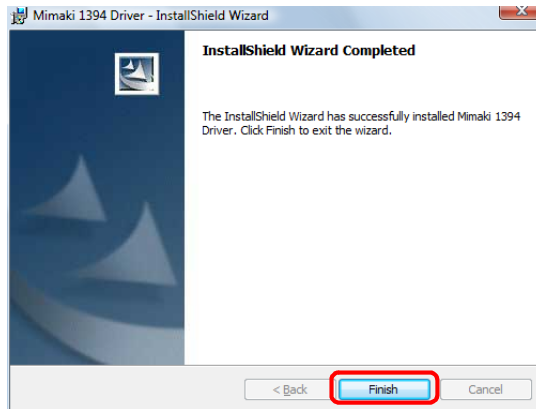
Click [Cancel] to stop installation.

- 8 Installation completes.**



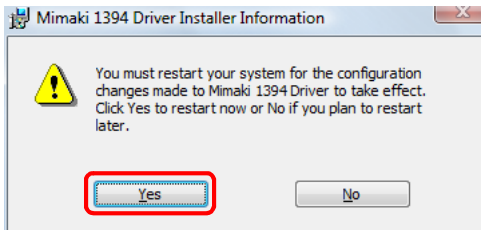
Click [OK] .

## 9 Completion screen appears.



Click **Finish**.

## 10 Click **Yes** to restart system.



## 11 Connect a plotter and a computer with a IEEE1394 cable.

- For details of the connecting procedures, refer to the Operation Manual of the plotter.

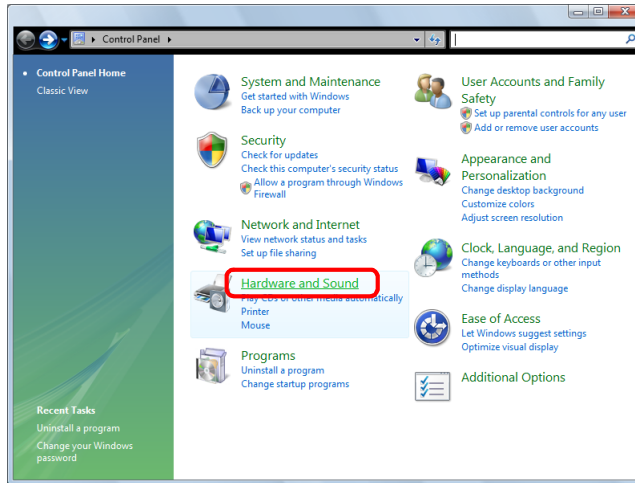
## Confirm the installation

Confirm the installed IEEE1394 driver.

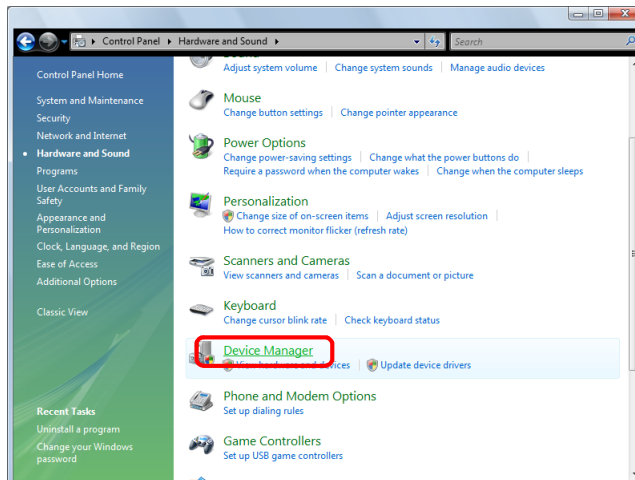


- In case a plotter is not connected, the device cannot be recognized.  
Connect a plotter with a IEEE1394 cable before confirming the installation.

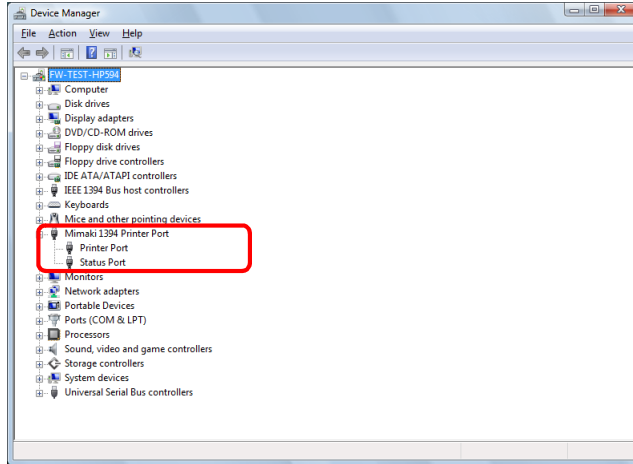
### 1 Click [Control Panel] - [Hardware and Sound].



### 2 Click [Device Manager].



### 3 Confirm “printer Port” and “Status Port” are displayed under the “Mimaki 1394 printer Port”.

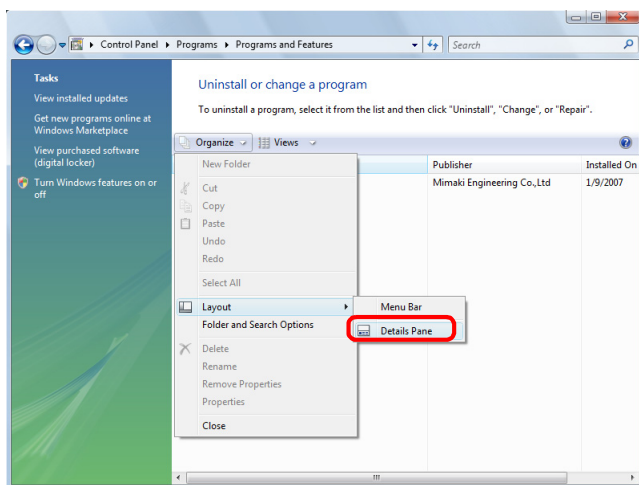


- When the device is not appeared or a caution mark appears on the screen, the installation has not been completed properly. Confirm the following items.
  - Confirm the status of computer referring to [Precaution in Use] of P.2. and then re-perform installation.
  - Make sure that the IEEE1394 cables of computer and plotter are securely connected.
  - Reboot the computer.
  - After uninstalling the driver( → P.18), try again the installation.

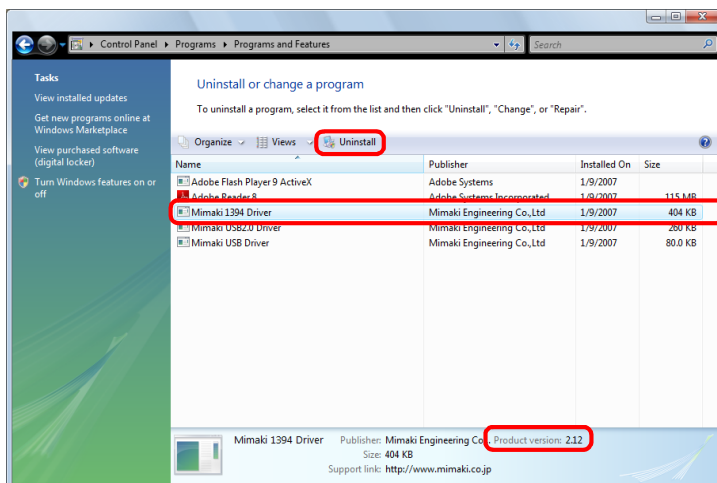
In case the device is not appeared even if confirming the above, please call your local distributor for services.

## Uninstalling the driver / Confirming the version

- 1 Remove a IEEE1394 cable that connects plotter and computer.
  - When you confirm the version, the IEEE1394 cable is not required to be removed.
- 2 Select [Control Panel] from the Start Menu.
- 3 Click [Uninstall a program].
- 4 If [Details Pane] is not displayed, click [Organize] - [Layout] - [Details Pane] to display [Details Pane].

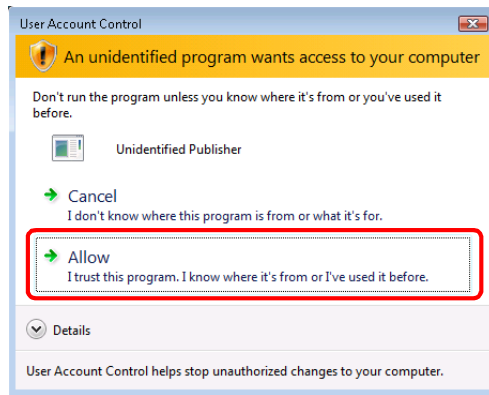


- 5 Select [Mimaki 1394 Driver], then click [Uninstall].

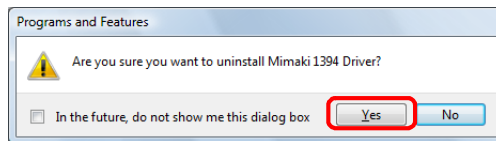


- See [Product version] in the lower right of the screen to confirm the version of the driver.  
If the version is not displayed, increase the size of the window.

## 6 User Account Control is displayed. Click **Allow** .

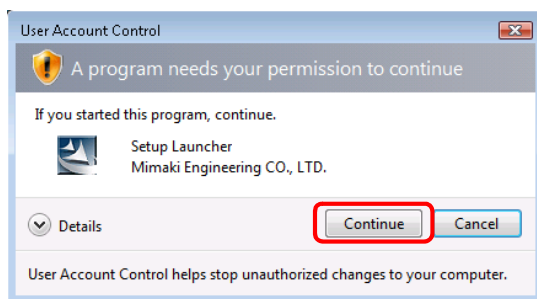


## 7 Click **Yes** .

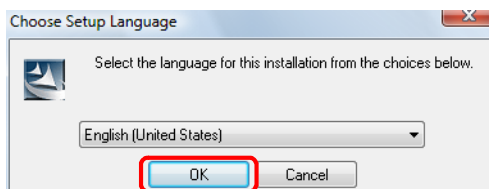


## Upgrading the driver

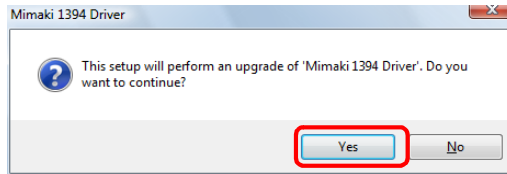
- 1 Make access to Mimaki Engineering's Home Page (<http://www.mimaki.co.jp/english/top/index.php>) and display the down-loading page of IEEE1394 driver.**
  - The down-loading page displays the version information, renewal date, name of the file to be downloaded.
- 2 Download the file to your computer.**
  - The file with the same name as described in [File name] in downloading page will be downloaded.
- 3 Double-click the downloaded file to decompress.**
- 4 Remove a IEEE1394 cable that connects plotter and computer.**
- 5 Double-click [Setup.exe] in [IEEE1394\_v\*\*\*].**
  - [\*\*\*] indicates IEEE1394 driver's version.
- 6 Display the User Account Control screen. Check that the issuer is Mimaki and click Continue.**



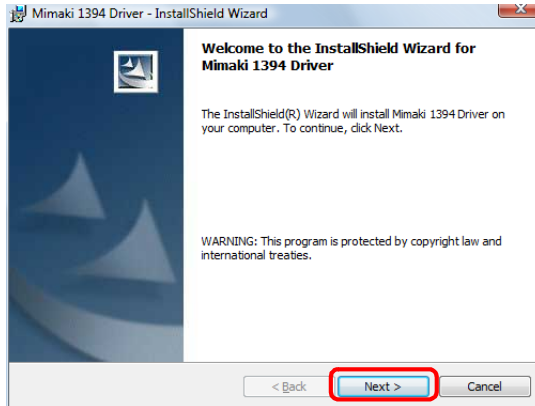
- You may be asked to enter the Administrator password. In this case, enter the Administrator password and go on to the next step.
- 7 Select the language and click OK.**



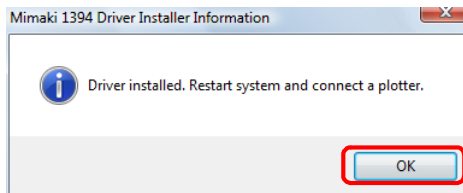
**8 Confirmation screen of version upgrading appears. Click Yes.**



**9 Install wizard activates. Click Next.**

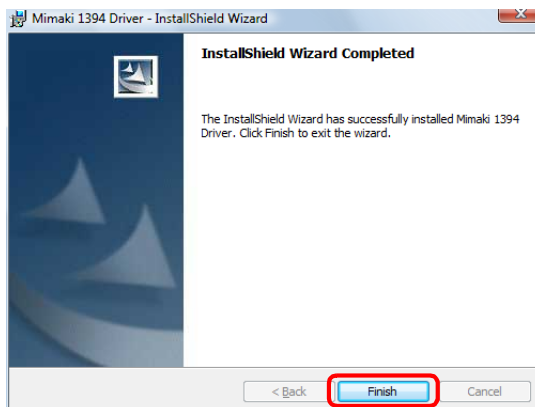


**10 Installation completes.**



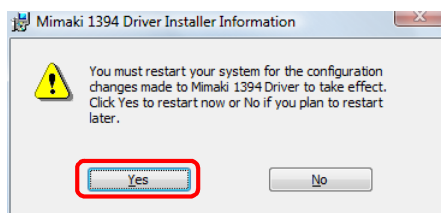
Click OK.

**11 Completion screen is displayed.**



Click Finish.

## 12 Click **Yes** to restart system.



## 13 Connect a plotter and a computer with a IEEE1394 cable.

- For details of the connecting procedures, refer to the Operation Manual of the plotter.

- When you wish to confirm if the installation is completed properly, please refer to page 16.



