



- Depending on media, pass-to-pass banding may occur by the irregularity of feed, even if Feed Correction is set appropriately. To avoid this, SWJ incorporates MAPS which reduces banding by blurring the boundary between passes.
- The effect of MAPS depends on the input value of speed adjustment.
  - Value ( + )→MAPS (ON), Print Speed (Up), MAPS effect (Down)
    - \* The setting sometimes becomes invalid. Please conduct the check printing of the image quality before the main printing.
  - Value ( - )→MAPS (ON), Print Speed (Down), MAPS effect (Up)
- Printing without using MAPS is possible.  
Please use MAPS according to application and media.

\*Note: There are modes (shown below) in which speed adjustment value becomes invalid, when the input value is set between 0 to +50.

Print mode	Pass Count	Scan speed
360x600	2	Standard
540x600	2	Standard
720x600	2	Standard
720x600	4	Draft
720x900	3	Standard
720x900	6	Draft

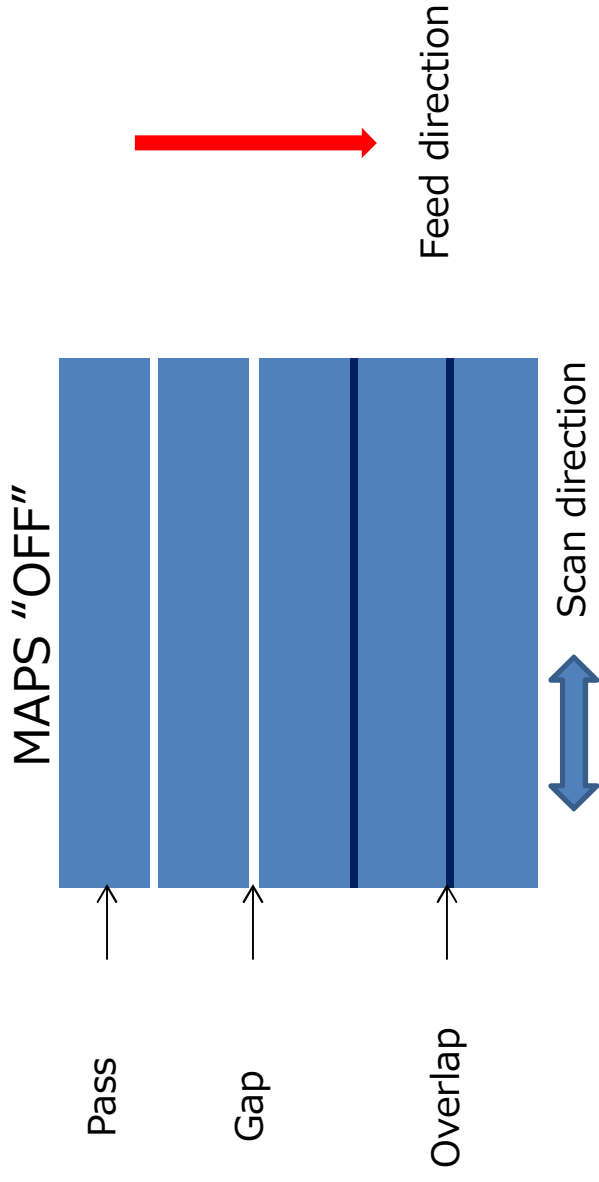
The value of MAPS ranges from +50 to -50.  
 When the value is set in +10, the print speed becomes 10% faster.  
 When the value is set in -10, the print speed becomes 10% slower.

## 1. SWJ-320 S2/S4

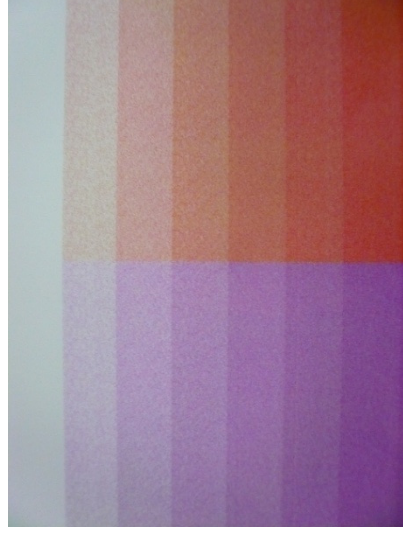
MAPS(Mimaki Advanced Pass System)

- The image of MAPS

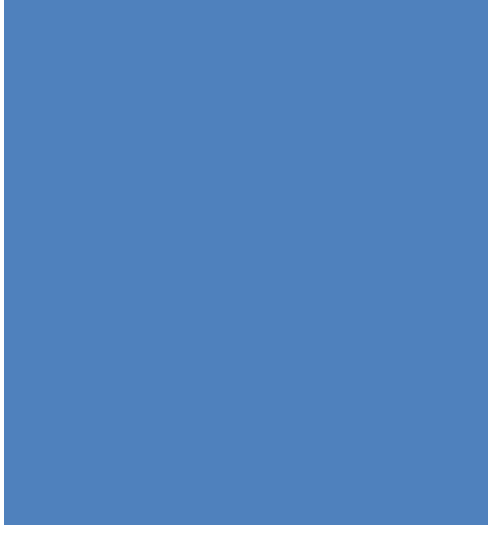
-MAPS reduces pas-to-pass banding



- The actual printing



MAPS "ON"



Overlap printing on each pass

Printing by blurring the boundary  
between passes

**Mimaki**

## Comparison of MAPS



- MAPS reduces the banding as the following pictures show.

## MAPS OFF

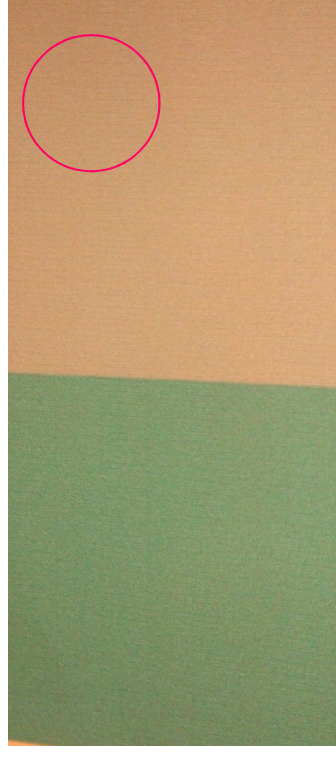
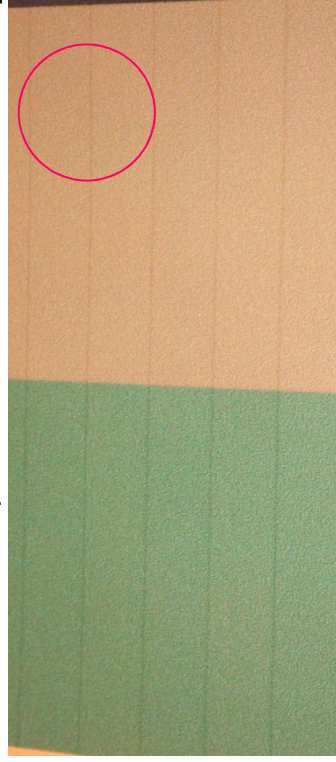
## MAPS ON

- Media : Tarpaulin, Print mode: 360x600dpi, 2 pass



MAPS Speed adjustment value:-10

- Media : PVC, Print mode: 720x600dpi, 8 pass



MAPS Speed adjustment value:-20